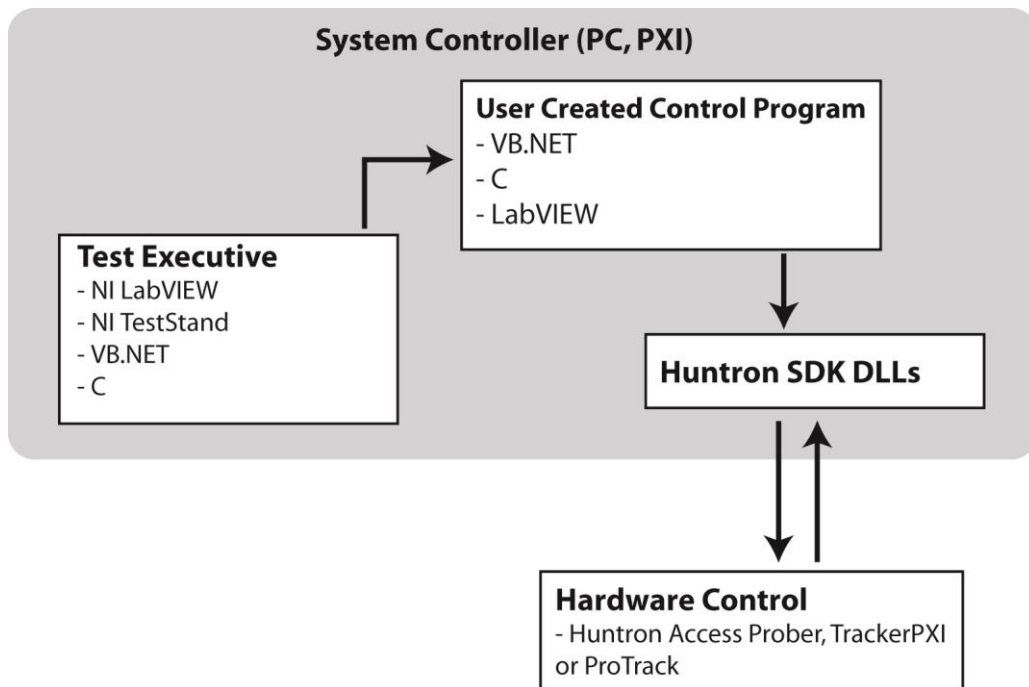


Huntron Hardware Software Development Kit (SDK)

The Huntron SDK allows creation of programs that implement control of Huntron hardware products. Using in-house programming or integration services, the SDK allows the creation of custom software systems. The SDK also allows existing programs to be modified. The SDK provides control of Huntron hardware including Trackers, Probers and Prober cameras.

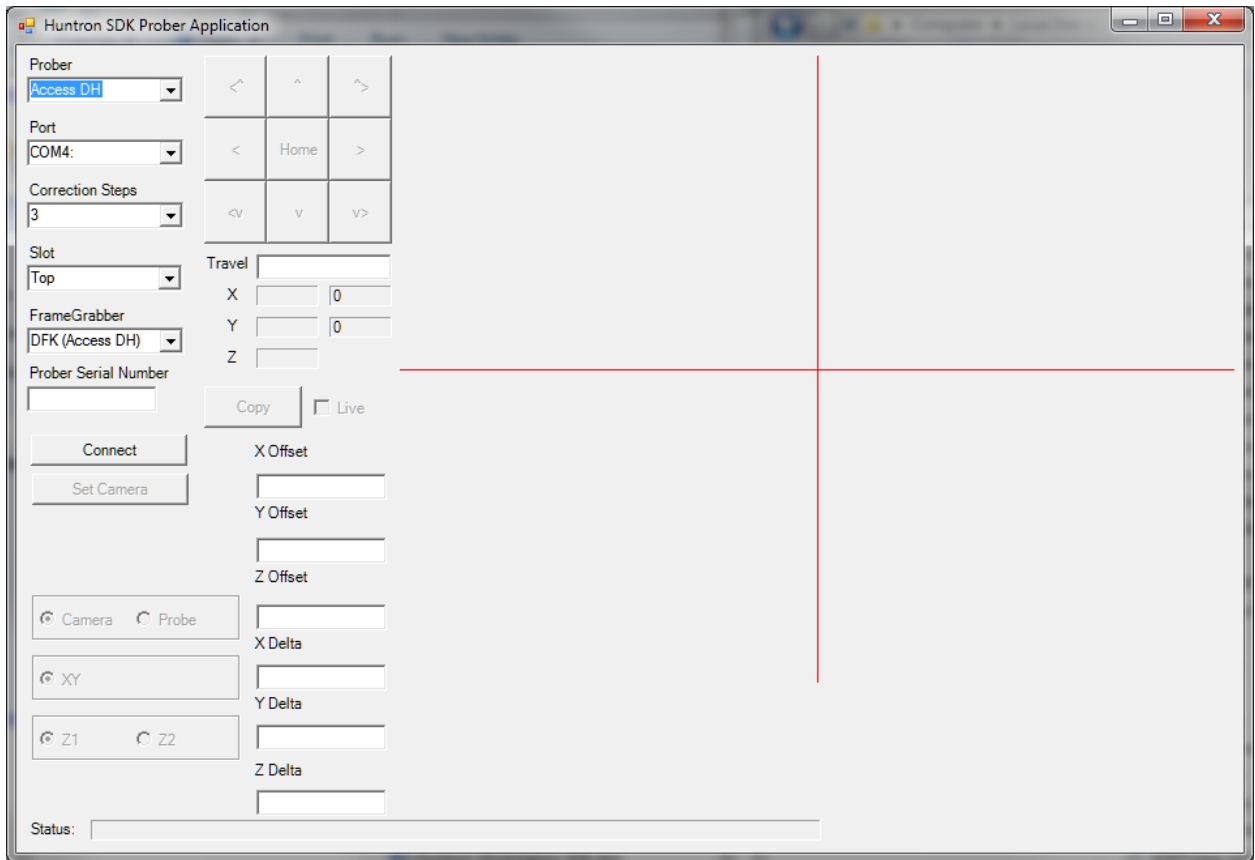
The SDK opens the door for other uses of Huntron Probers:

- Add automated guided probing to test systems (Functional, Fault Injection, etc.)
- Control the movement of the Prober to locations and capture images with the built-in camera for creating optical solutions.
- Use the probe head for pressing buttons/switches to automate testing.



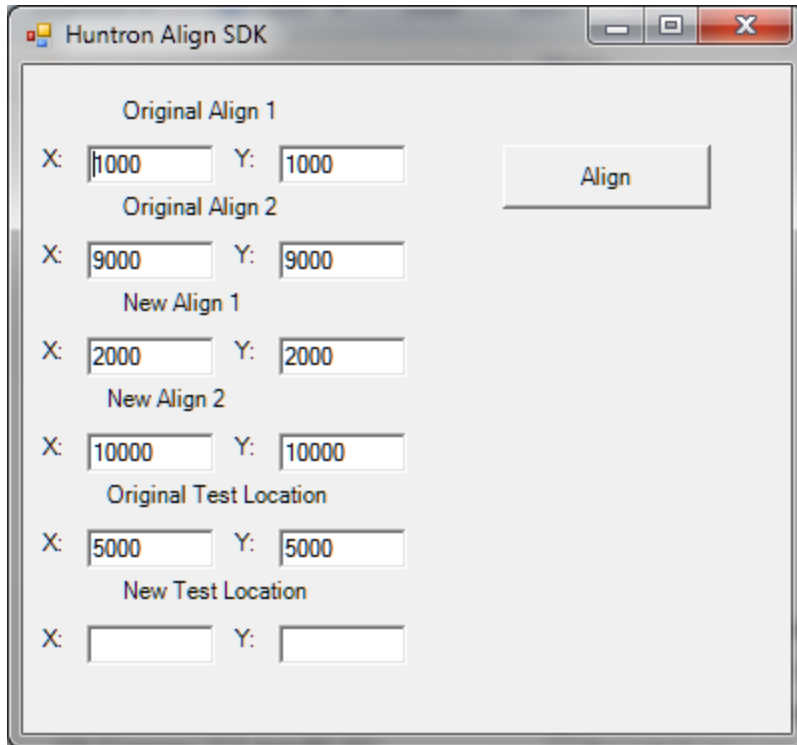
The SDK includes all DLLs needed to control the hardware and sample applications in VB.NET 2010. The DLLs are .NET assemblies with built-in COM interfaces. The DLLs are documented in help files with VB.NET, VC++ and C# prototypes. For use with other programming languages contact Huntron.

The following are screen captures and explanations of the sample programs:



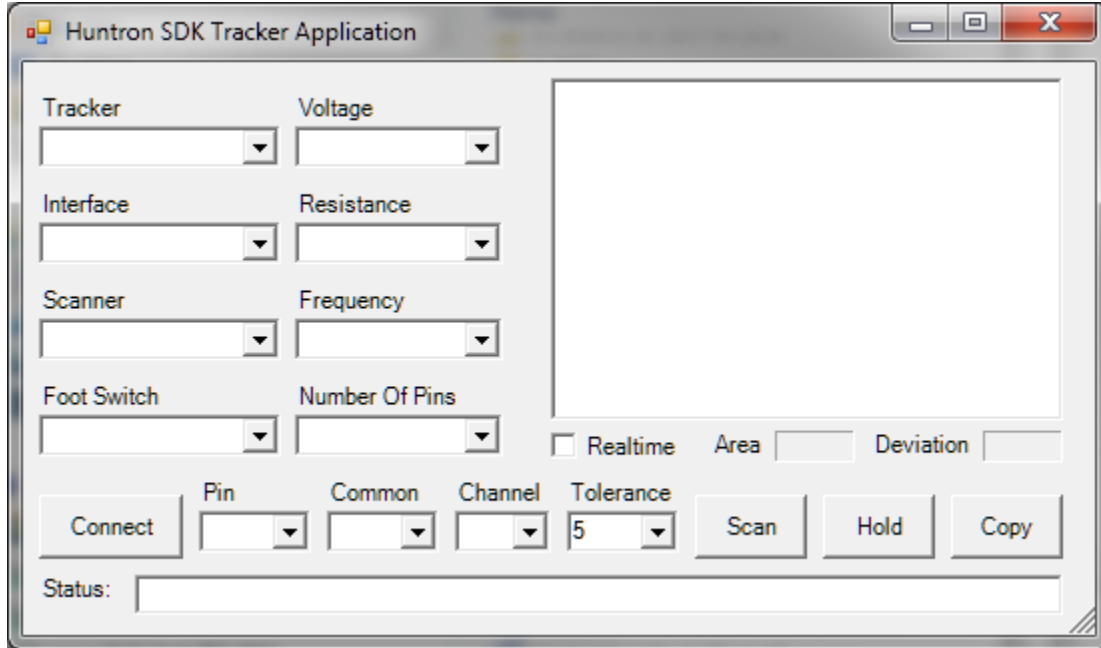
Huntron Prober and Prober Camera Sample VB.NET 2010 application

The SDK Prober implementation allows for moving the Prober in the X, Y and Z axis. The SDK Camera implementation allows for capturing and displaying images from Sensoray 2250 frame grabbers and Imaging Source DFK USB Cameras. The Huntron SDK also supports the use of National Instruments Vision software for comparing images to implement an Auto Align function and other image comparison uses.



Huntron Align Sample VB.NET 2010 sample application

The SDK Align Implementation allows for correct test locations based on the changes in alignment point positions.



Huntron Tracker VB.NET 2010 Sample Application

The SDK Tracker implementation allows for control of a Tracker or a Tracker and Scanner. The Tracker control consists of setting range parameters, capturing signatures and comparing signatures. The Scanner control allows for setting test and common pins.



Metromatics

For further information or pricing, please contact us:

Melbourne 03 9872 4592 Sydney 02 9460 4355
Brisbane 07 3868 4255 Adelaide 08 8343 8516

sales@metromatics.com.au
www.metromatics.com.au