



FEATURES

- *Decodes NASA 36 or IRIG B Serial Time Code, selectable.*
- *Nine digit time display, 2.3" high LED characters.*
- *Internal TCXO clock maintains timing in the event of a loss of serial time code input.*
- *Serial RS-232 control input.*
- *Non-volatile memory retains set-up in the event of power failure.*
- *Offset feature allows different time zones to be displayed from common time code input.*
- *Multimode Countdown Clock.*

DESCRIPTION

The ITS Model 6075B Time Code Display is a two function unit that decodes and displays the IRIG B Serial Time Code and also will operate as a countdown clock. The unit displays the time as Days, Hours, Minutes and Seconds on a four inch LED display. The 6075B displays the applied time code as DDD:HH:MM:SS, or in the absence of an applied signal, the internal clock. The display intensity is user adjustable via a rear panel potentiometer. If there is a loss of serial time code input, the displayed colons flash at a 1Hz rate to alert the operator that the unit is operating on the internal clock.

The 6075B is housed in an aluminum enclosure, 21.25 inches wide, 4.0 inches high, 1.75 inches deep (not including mounting bracket). The unit may be mounted on shelf, wall or ceiling using the included mounting brackets.

All controls and connectors are on the rear panel.

Included with the 6075B is a Windows based GUI which provides for remote control via the RS-232 port.

The 6075B is powered by 12VDC or 100 to 240VAC 50/60Hz with included power supply.

Model 6075B Time Code Display

SPECIFICATIONS

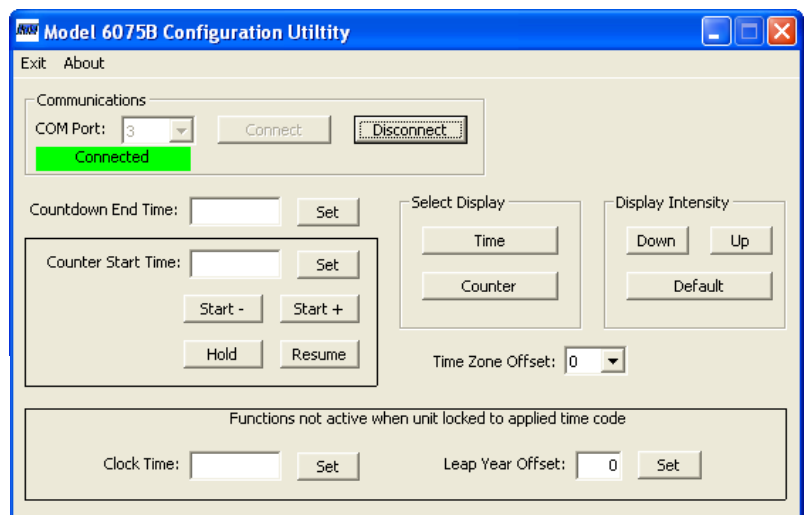
Time Code	NASA 36 serial time code or IRIG B serial time code (switch selectable).
Display	Segmented LED. Red. Numeric: 7 segment. Character height: 2.3 inches. Segment width 5.5 mm
Serial Input	RS232C, 9600 baud, ASCII message format. Baud Rate is internally selectable from 300 to 19.2K.
Internal Reference (Active in absence of time code input)	Temperature compensated crystal oscillator (TCXO) $\pm 2 \times 10^{-6}$.
Non-volatile Memory	Lithium powered RAM. 10 year life.
External Power	12 VDC, 720MA (100 to 240VAC 50/60Hz power supply included).
Enclosure	21.25 inches wide, 4.0 inches high, 1.75 inches deep (not including mounting bracket). Enclosure is black with textured clear coat.
Configuration Utility	Includes Windows based GUI. Provides for remote control and configuration setup via serial port.



For further information or pricing, please contact us:

Melbourne 03 9872 4592 Sydney 02 9460 4355
Brisbane 07 3868 4255 Adelaide 08 8343 8516

sales@metromatics.com.au
www.metromatics.com.au




Metromatics

instrumentation
technology
systems 

19360 Business Center Drive • Northridge, CA • 91324-3547
(818) 886-2034 • FAX (818) 886-7573 • Email sales@ITSamerica.com