

Argon Rugged Display w/ Embedded Computer- AT104

10.4", Small Footprint Tablet for C4ISR Platforms



AT104 in Portrait Mode w/ Bezel Buttons

Argon offers a 10.4" rugged display with an embedded computer, or Tablet, that is particularly suitable for Command & Control applications where space is at a premium such as in combat & tactical vehicles, mobile shelters, and close-in naval spaces. The AT104's small bezel size, flexible mounting configurations, powerful processors (customer can choose from a variety of Intel base processors) configurable I/O, and universal AC/DC power supply make it a valuable solution for many mission critical applications.

The AT104 is a full-featured combat vehicle ready unit with a wide variety of standard options. Argon is prepared to customize the display for your program and platform needs to ensure that the product meets your exacting requirements.

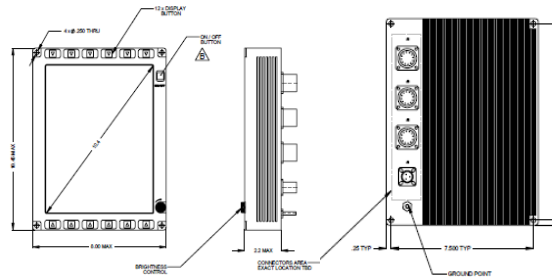
Main Features:

- Small Mechanical Outline
- Low Weight
- Gen 6 i7-6600U 2.6GHz 3.4GHz Turbo, 2 core 4 thread, 4MB Cache
- Analog Resistive or Capacitive Touch Screen (P-Cap)
- Programmable Bezel Buttons
- Customizable Analog/Digital I/O, Optional CANBus
- High Brightness
- Fully Enclosed Unit

Argon Corp has over 28 years of experience designing, producing and supporting a variety of rugged computing and display solutions that serve land based, naval and airborne applications. These solutions are also suitable for adjacent applications where extreme, combat like environments are present, such as oil and gas exploration, and mining activities.

Argon has developed a standing reputation for working with customers to design custom solutions and reliable products. Add to this extensive industry knowledge and Argon is a partner you can trust.

February 2020



Technical Specifications for AT104 (Typical)

Display	
LCD	10.4" Diagonal, TFT 16M Colors, Wide Viewing Angles
Resolution	640 x 480, 800 x 600, 1024 x 768 (XGA), Portrait or Landscape Mode
Brightness	0 to 100% Dimming, Standard 300 nits (w/o optional TS)
Touch Screen	Ruggedized, Analog Resistive or Capacitive
Other	NVG Compatibility (Option)
Overall Unit	
Dimensions (Closed)	10.45" x 8.00" x 2.4"
Weight	6.5+- lbs Typical
Power Input	9 to 36 VDC or AC 110/220 VAC
Power Consumption	30 - 65W Watts Typical
Chassis	Conduction/Convection Cooled, Fully Enclosed, Aluminum Chassis
Other User Controls	Customer can Select Buttons/Switches and Locations per Application Needs
Computer	
Processor/RAM	Gen 6 i7-6600U 2.6GHz 3.4GHz Turbo, 2 core 4 thread, 4MB Cache/8GB DDR3
Storage	256 GB SSD Standard
OS	Windows 10 or Specify
I/O	Ethernet, RS-232, USB, CANBus, VGA Output, Specify Others/Quantity
Sound/Microphone	Onboard Sound Card, Speaker/Microphone Jacks (Option)
Expansion Options	Removable HD, Customer Defined I/O
Environmental	The Following are some Sample Specifications:
Operating Temp	-10°C to +55°C, -40°C Option
Storage Temp	-40°C to +71°C
Shock	40g, 11msec
Vibration	MIL-STD-810, Method 514
EMI/EMC	MIL-STD-461E
Altitude	40k ft Operating, 40k ft Non-Operating
Humidity, Salt Fog,	Unit is 100% enclosed, Resistant to Salt Fog, Fungus, MIL-STD-810
Humidity	Operating & Storage – 95% @ 40°C, Non-Condensing