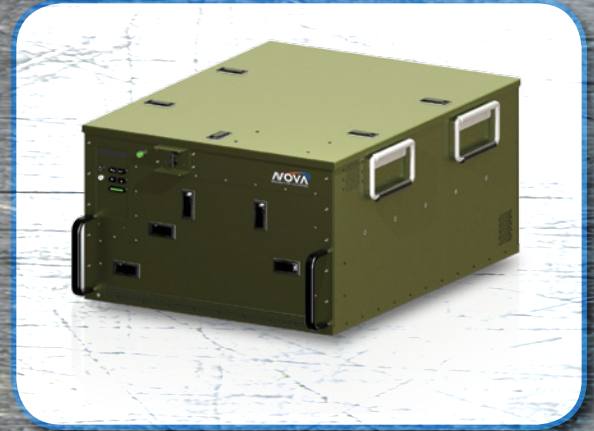


MODEL 1351

MIL-GRADE BLACK & WHITE LASER PRINTER



Model 1351 is NOVA's second-generation Military Grade monochrome laser printer. Selected by military land forces, the 1351 continues NOVA's tradition of providing a battlefield-ready printer meeting MIL-STD-461 (EMI/EMC), MIL-STD-704 (transients) and MIL-STD-810 for shock, transportation, bench handling, vibration, crash acceleration, explosive atmosphere, sand and dust, temperature, altitude and humidity.

Built around Brother's HL-L2360DW engine, the 1351 adds features from its predecessor such as faster print speed, upgraded USB port, built-in Ethernet port, 2400 x 600 dpi effective print output, lower power consumption, front panel status indicator LEDs, and easy to use front panel controls. Toner and drum consumables used in the 1351 are standard Brother replacements.

Paper ingress is handled elegantly through a sealed, hinged access door on the front of the printer housing. Paper egress is accessed from the hinged top cover or the front door held tight with quarter turn latches.

Available options include 220 VAC or 18-36 VDC input power via external military grade inverter provided by parent company Technology Dynamics, Inc. (www.technologydynamicsinc.com). Standard mounting configurations include tabletop, 19" rackmount or ARINC style shock tray recommended for vehicle and other high shock applications.

This upgraded unit includes an EMI filter provided by sister division Nova Electric (www.novaelectric.com), Steel-coil isolators, optional heater and ability to mount on an external ARINC mounting tray. This unit is also further protected from the elements by conformal coating of PCBs and further ruggedization of the print engine.

Please visit our web site for more information: www.novaintegration.com

- **32 ppm print speed**
- **2400 X 600 dpi print resolution**
- **Fast Ethernet and USB 2.0 ports via Rugged Military Circular Connector)**
- **Tested and Passed:**
 - MIL-STD-810F Shock, Method 516.5**
 - MIL-STD-810F Vibration, Method 514.5**
 - MIL-STD-461E EMI/EMC**
 - MIL-STD-704E Transients**
 - RTCA/DO-160F Humidity, Section 6.3.1, Category A**
- **Input power options:**
 - 115 VAC @ 47-63 Hz**
 - 220 VAC @ 50 Hz**
 - 18-32 VDC via External Inverter**
- **Tabletop, Rackmount or ARINC Style Shock Tray Mounting**
- **Automatic Duplex Printing**
- **Heater for -20°C or -40°C Operation**
- **256 MHz Processor and 32 MB Memory**

**Metromatics**

ENVIRONMENTAL CHARACTERISTICS

Temperature, operating	5°C to +50°C -20°C to +50°C w/ heater
Temperature, non-operating	-20°C to +71°C
Humidity	RTCA/DO-160F, Section 6.3.1, Category A, 6% to 95% RH, non-condensing
Rapid decompression	MIL-STD-810F, Method 500.4, Procedure III from 8,000 ft. up to 41,000 ft. in 15 sec.
Altitude, operating	-1,500 ft. to 15,000 ft.
Altitude, non-operating	-1,500 ft. to 45,000 ft.
Vibration, operating	MIL-STD-810F, Method 514.5, Procedure I, Cat 8 Wheeled Vehicle, US Army CH5-3 profile
Vibration, non-operating	MIL-STD-810G, Method 514.6, Proc I, secured cargo, basic transportation
Shock, operating	MIL-STD-810F, Method 516.5 Procedure I (functional shock for wheeled vehicles)
Shock, transportation	MIL-STD-810F, Method 516.5, Procedure IV, Transit Drop
Shock, non-operating (Bench handling)	MIL-STD-810F, Method 516.5 Procedure VI
Explosive atmospher	MIL-STD-810F, Method 511.4, Procedure I (up to 11,000 ft.)
Crash acceleration	MIL-STD-810F, Method 516.5 Procedure V (16G limit)
Inclination	0° to 30° in any axis

EMI/EMC	MIL-STD-461E, Method CE101, CE102, CS101, CS102, CS114, CS115, CS116, RE101, RE102, RS101, RS103
ESD	DO-160E, Section 25
Grounding and bonding	MIL-STD-464 & BAC5117-1
Sand and dust	MIL-STD-810F, Method 510.4, Proc. I, II & III
Rain	MIL-STD-810F, Method 506.4, Procedure III

ELECTRICAL CHARACTERISTICS

Input Power (standard)	110 VAC @ 60Hz 220 VAC @ 50Hz 18-32 VDC w/ external inverter
Power Consumption	Printing 468W Standby 58W
Data Interface	Ethernet via RJFTV D38999 USB 2.0 via USBFTV D38999
EMI filtering	MIL-STD-461 compliant, military grade input power EMI Filter standard
Power transients	MIL-STD-704 or MIL-STD-1275

PHYSICAL CHARACTERISTICS

Dimensions	10.9" H x 17.43" W x 22.58" D
Weight	40 lbs. (Standard tabletop)
Mounting	Tabletop, Rackmount or Shock Tray

PERFORMANCE CHARACTERISTICS

Resolution	2400 x 600 dpi
Print Speed	32 ppm black
Duplex Printing	Automatic
Memory	32MB Installed
Emulations	GDI, PCL6
Paper Sizes	Letter (8.5" x 11") & A4
Paper Input	250-sheet input tray
Processor	266 MHz

ORDERING TABLE

95-1351-MPH00-00X

MOUNTING	POWER	HEATER	CONFIG
0 Tabletop	3 110 VAC	0 None	1 Standard
2 Rackmount	4 220 VAC	1 Installed	x Customer Specific
4 Shock Tray	8 18-32 VDC		

Contact factory for additional configurations and options

CONSUMABLES

56-100014-100	Model 1351, TN660, High Yield Black Toner Cartridge
---------------	---

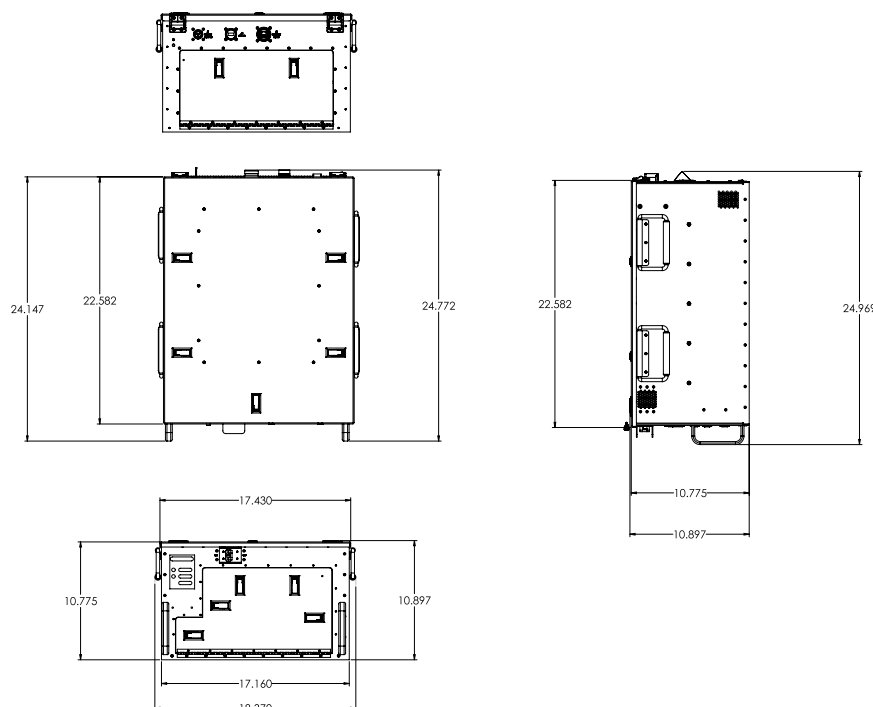


For further information or pricing, please contact us:

Melbourne 03 9872 4592 Sydney 02 9460 4355
Brisbane 07 3868 4265 Adelaide 08 8343 8516

sales@metromatics.com.au
www.metromatics.com.au

OUTLINE DRAWING



* Products may vary from the specifications and images depicted within this document and are subject to change without notice. Nova Integration Solutions takes no responsibility for damages incurred due to errors contained in this document. Please contact Nova Integration Solutions for further information about our products.