

MODEL 1301

RUGGED BLACK & WHITE LASER PRINTER



Model 1301 is NOVA's second-generation designed-to-meet Rugged monochrome laser printer. Selected by military land forces, the 1301 continues NOVA's tradition of providing a battlefield-ready printer with advanced features, convenient connectivity and human factor engineering.

Built around Brother's HL-L2360DW engine, the 1301 adds features from its predecessor such as faster print speed, upgraded USB port, built-in Ethernet port, 2400 x 600 dpi effective print output, lower power consumption, front panel status indicator LEDs, and easy to use front panel controls. Toner and drum consumables used in the 1301 are standard Brother replacements.

Paper ingress is handled elegantly through a sealed, hinged access door on the front of the printer housing. Paper egress is accessed from the hinged top cover or the front door held tight with quarter turn latches.

Available options include 220 VAC or 18-36 VDC input power. Standard mounting configurations include tabletop or 19" rackmount.

For a more rugged solution, the Model 1351 is the fully MIL-SPEC sibling to the Model 1301. This upgraded unit includes an EMI filter provided by sister division Nova Electric (www.novaelectric.com), Steel-coil isolators, optional heater and ability to mount on an external ARINC mounting tray. This unit is also further protected from the elements by conformal coating of PCBs and further ruggedization of the print engine.

Please visit our web site for more information: www.novaintegration.com

- › **32 ppm print speed**
- › **2400 X 600 dpi print resolution**
- › **Fast Ethernet and USB 2.0 ports (both standard)**
- › **Designed-to-Meet:**
 - MIL-STD-810G Shock**
 - MIL-STD-810G Vibration**
 - MIL-STD-461F EMC**
 - MIL-STD-1686A ESD**
- › **Input power options:**
 - 115 VAC @ 47-63 Hz**
 - 220 VAC @ 50 Hz**
 - 18-32 VDC**
- › **Rackmount or Tabletop mounting configuration**
- › **Automatic Duplex Printing**
- › **256 MHz Processor and 32 MB Memory**



ENVIRONMENTAL CHARACTERISTICS

Temperature, operating	5°C to +50°C
Temperature, non-operating	-20°C to +71°C
Humidity	10% to 95% RH, non-condensing
Altitude, operating	-1,500 ft. to 15,000 ft.
Altitude, non-operating	-1,500 ft. to 45,000 ft.
Vibration, operating	MIL-STD-810G, Method 514.6, Proc 1
Vibration, non-operating	MIL-STD-810G, Method 514.6, Proc I, secured cargo, basic transportation
Shock, operating	MIL-STD-810F, Method 516.6 Procedure I
Shock, transportation	MIL-STD-810F, Method 516.6, Procedure V
Shock, non-operating (Bench handling)	MIL-STD-810F, Method 516.5 Procedure VI
Inclination	0° to 30° in any axis
EMI/EMC	MIL-STD-461F, Method CE102, CS101, CS114, CS115, RE102, RS103
ESD	MIL-STD-1686A
Grounding and bonding	MIL-STD-464 & BAC5117-1
Sand, Dust and Rain	Highly resilient

PHYSICAL CHARACTERISTICS

Dimensions	10.8" H x 17.5" W x 22.6" D
Weight	38 lbs. (Standard tabletop)
Mounting	Tabletop or Rackmount

ELECTRICAL CHARACTERISTICS

	110 VAC @ 60Hz
Input Power (standard)	220 VAC @ 50Hz
	18-32 VDC
Power Consumption	Printing 468W Standby 58W
Data Interface	Ethernet via RJFTV D38999 USB 2.0 via USBFTV D38999

PERFORMANCE CHARACTERISTICS

Resolution	2400 x 600 dpi
Print Speed	32 ppm black
Duplex Printing	Automatic
Memory	32MB Installed
Emulations	GDI, PCL6
Paper Sizes	Letter (8.5" x 11") & A4
Paper Input	250-sheet input tray
Processor	266 MHz

ORDERING TABLE

95-1301-MP000-00X

MOUNTING	POWER	CONFIG
0 Tabletop	3 110 VAC	1 Standard
2 Rackmount	4 220 VAC	x Customer Specific
	8 18-32 VDC	

Contact factory for additional configurations and options

CONSUMABLES

56-100014-100	Model 1301, TN660, High Yield Black Toner Cartridge (110V power input models)
56-100014-101	Model 1301, TN2310, High Yield Black Toner Cartridge (220V power input models)

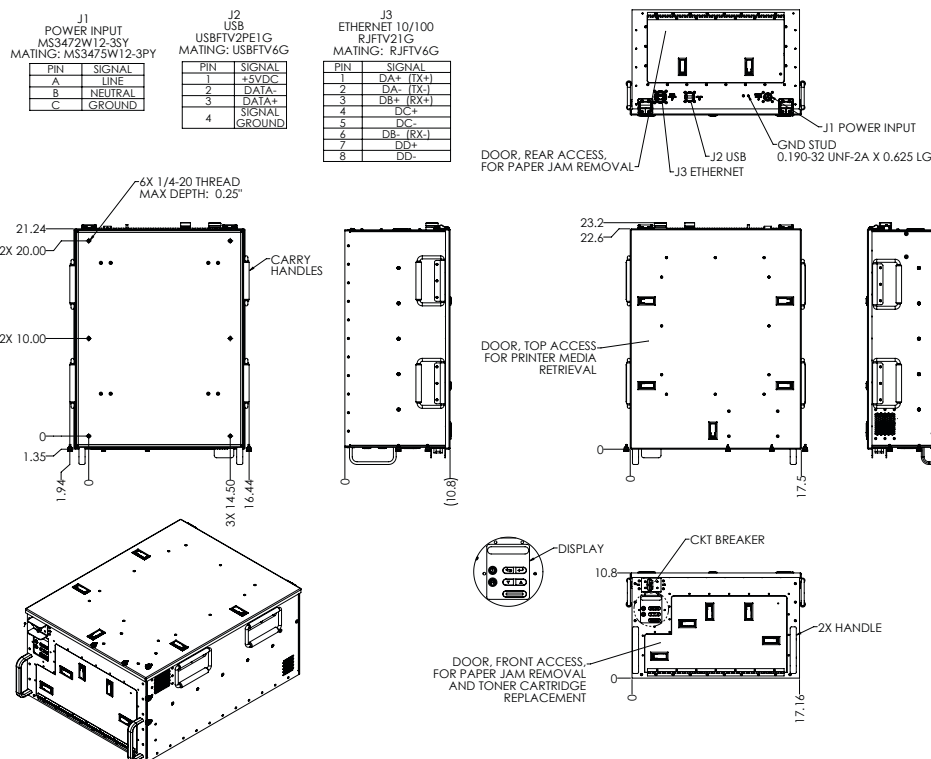


For further information or pricing, please contact us:

Melbourne 03 9872 4592 Sydney 02 9460 4355
Brisbane 07 3868 4255 Adelaide 08 8343 8516

sales@metromatics.com.au
www.metromatics.com.au

OUTLINE DRAWING



* Products may vary from the specifications and images depicted within this document and are subject to change without notice. Nova Integration Solutions takes no responsibility for damages incurred due to errors contained in this document. Please contact Nova Integration Solutions for further information about our products.