

MODEL 1401

MILITARY GRADE

COLOR LASER PRINTER



Inspired by NASA for use on their specially configured fleet of 747 aircraft, the Model 1401 was developed and is our newest designed-to-meet MIL spec color laser printer.

Built around the Brother HL-3170CDW print engine, the 1401 builds on its predecessor with faster print speed, upgraded USB port, built-in ethernet port, high resolution print output, new automatic duplex printing, and improved front panel status LCD display. Toner and drum consumables are offered by Brother as standard product and are readily available in the consumer marketplace.

Paper ingress is handled elegantly through a large, sealed, hinged access door on the front of the printer housing; paper egress is accessed from the same door on the front of the housing. Hinged top and rear doors facilitate clearing of occasional paper jams, maintenance, and changing toner cartridges.

Standard mounting configurations for the 1401 include tabletop, ARINC shock tray, and 19 inch rackmount. Standard power input options include 115 VAC, 220 VAC, or 18-32 VDC.

Available options include heater circuitry for extended temperature operation, conformal coating, front panel indicators, sealed housing for environmental rating, I/O connectors, custom mounting, and customer defined paint colors and silk screening.

For more information visit our web site: www.novaintegration.com

- › **A proprietary reference design concept facilitates options and numerous standard and custom configurations**
- › **Print engine is internally shock/vibration isolated**
- › **23 pages per minute print speed (monochrome and color)**
- › **600 x 2400 dpi print resolution max**
- › **128MB memory installed**
- › **8.5" x 14" max paper size**
- › **Duplex printing capability**
- › **10/100 Ethernet and USB 2.0 ports**
- › **Designed-to-meet:**
 - MIL-STD-810G Shock**
 - MIL-STD-810G Vibration**
 - MIL-STD-461F EMC/EMI**
 - MIL-STD-1686A ESD**
- › **Input power:**
 - 115 VAC @ 60 Hz (nominal)**
 - 220 VAC @ 50 Hz (nominal)**
 - 18 - 32 VDC**
 - 110VAC @ 47-440 Hz (optional)**
- › **Tabletop, rackmount, and ARINC shock tray mounting options**



ENVIRONMENTAL CHARACTERISTICS

Temperature, operating	0°C to +40°C -20°C to +40°C (w/ heater)
Temperature, non-operating	-40°C to +71°C
Humidity	10% to 95%, non-condensing
Altitude, operating	-1,500 ft. to 15,000 ft.
Altitude, non-operating	-1,500 ft. to 40,000 ft.
Vibration	MIL-STD-810F, Method 514.6, Procedure I
Shock, operating	MIL-STD-810F, Method 516.6, Procedures I
Shock, non-operating (Bench handling)	MIL-STD-810F, Method 516.6, Procedures V & VI
EMI/EMC	MIL-STD-461F, CE102, CS101, CS114, CS115, CS116, RE102 & RS103
ESD	MIL-STD-464 DO-160E, Section 25
Sand and Dust	MIL-STD-810F, Method 510.4, Procedure III
Rain	MIL-STD-810F, Method 506.4, Procedure III

PHYSICAL CHARACTERISTICS

Dimensions	13.78" H x 17.16" W x 23.9" D
Weight	65 lbs. (Standard tabletop)
Mounting	Tabletop, rackmount, ARINC shock tray

ELECTRICAL CHARACTERISTICS

Input Power (standard)	115 VAC @ 60 Hz (nominal) 220 VAC @ 50 Hz (nominal) 18-32 VDC
Input Power (optional)	110VAC @ 47-440 Hz Contact factory
Power Consumption	Printing 420W Standby 80W Deep Sleep <1W Add 100W with heater
EMI Filtering	MIL-STD-461 compliant, military grade input power EMI Filter standard
Power Transients	Optional (MIL-STD-704 or MIL-STD-1275)
Data Interface	10/100 Ethernet via RJFTV D38999 USB 2.0 via USBFTV D38999

PERFORMANCE CHARACTERISTICS

Resolution	600 x 2400 dpi
Print Speed	23 ppm color & black
Duplex Printing	Automatic
Memory	128MB Installed
Languages and Fonts	PCL 6, BR-Script3
Paper Sizes	Up to 8.5" x 14" (legal)
Paper Input	250-sheet input tray
Processor	333 MHz

ORDERING TABLE

95-1401-MPH00-00X

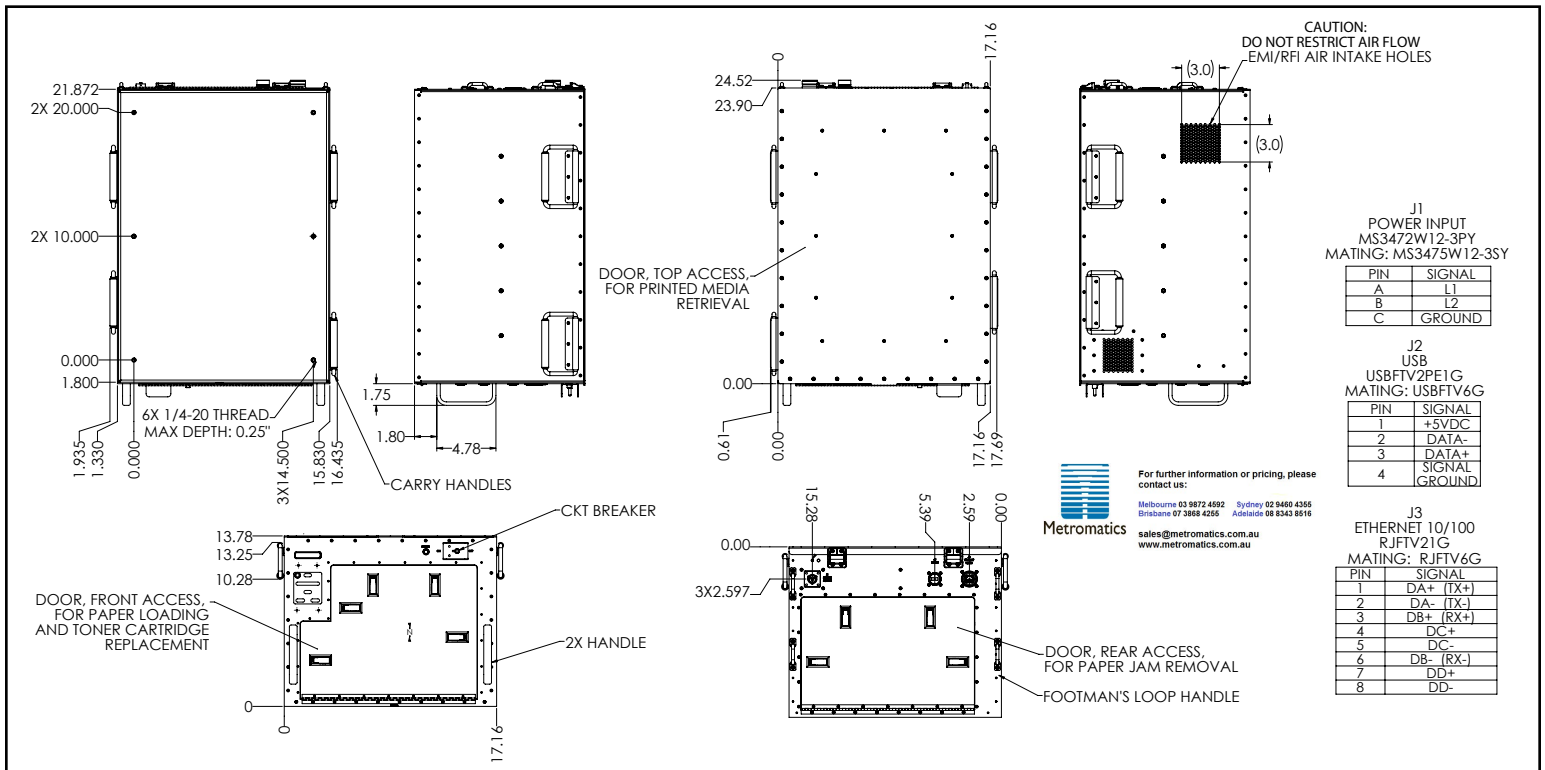
MOUNTING	POWER	HEATER	CONFIG.
0 Tabletop	3 110 VAC	0 None	1 Standard
2 Rackmount	4 220 VAC	1 Installed	x Customer Specific
4 Shock Tray	8 18-32 VDC		

Contact factory for additional configurations and options

CONSUMABLES

56-100010-100	Standard capacity black toner cartridge TN221BK (2,500 pgs)
56-100010-101	Standard capacity cyan toner cartridge TN221C (1,400 pgs)
56-100010-102	Standard capacity magenta toner cartridge TN221M (1,400 pgs)
56-100010-103	Standard capacity yellow toner cartridge TN221Y (1,400 pgs)
56-100010-104	High capacity cyan toner cartridge TN225C (2,200 pgs)
56-100010-105	High capacity magenta toner cartridge TN225M (2,200 pgs)
56-100010-106	High capacity yellow toner cartridge TN225Y (2,200 pgs)
56-100010-107	Drum unit set DR221CL (15,000 pgs)
56-100010-108	Belt unit BU220CL (50,000 pgs)

OUTLINE DRAWING



* Products may vary from the specifications and images depicted within this document and are subject to change without notice. Nova Integration Solutions takes no responsibility for damages incurred due to errors contained in this document. Please contact Nova Integration Solutions for further information about our products.