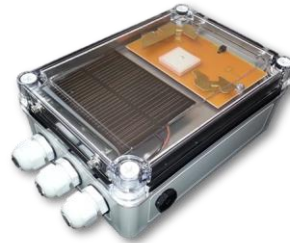


Own your Assets

With the world's most intelligent remote monitoring device at your fingertips, asset management has never been easier. The globally capable SC300, enables you to aggregate data from virtually anywhere, and its ultra low power footprint will operate for years without service.

With our "no compromise" approach to design, we've packed in a number of customer requested features, while maintaining simplicity and reliability.











Generator Applications

- Remote automation and control- Power on and off/ Gen Testing
- Live fuel levels with alert notification
- Engine run time, segments and totals
- Engine Temp
- Oil pressure
- GPS location
- Geofencing with alert notification



Specifications

-  1 Analog Input & 1 Digital Grounding Input- Alarm Capable. Intrinsically safe: Class I Div 1 Group D Certified
-  Multi-sensor RS485 deployment /UART Modbus, I2C
-  Cat-M1LTE/NBIoT. Multi-carrier Sim: Verizon, At&t, Sprint & T-Mobile. Global compatibility Option.
-  **Globalstar** Optional cellular communication with satellite fallback.
-  GPS enabled for mobile asset tracking
-  Integrated temperature & barometric pressure sensor
-  24/7 access to data on LevelCon Cloud or local SCADA
-  3x AA battery with optional solar power assistance



Sample Customer Views



**Fully Customizable
Data Interface**

**All Registers
Displayed in one
Convenient Location**

| Channel | Device ID | Base Value | Value | Metric | Date | Age | Status |
|---|--------------|------------|-----------------|---------|-----------------------|--------------------|---------------------|
| Group: No Group | | | | | | | |
| Modbus Control Unit - Command | 945493364827 | | 8528 | raw | 1/12/2021, 2:47:45 PM | 15 minutes | CONNECTED No Alerts |
| Modbus Control Unit - PumpSetPoint | 945493364827 | | 200 | Q/Day | 1/12/2021, 2:47:45 PM | 15 minutes | CONNECTED No Alerts |
| Modbus Control Unit - OutputVoltage | 945493364827 | | 0 | V | 1/12/2021, 2:47:45 PM | 15 minutes | CONNECTED No Alerts |
| Modbus Control Unit - Status | 945493364827 | | 32768 | raw | 1/12/2021, 2:47:45 PM | 15 minutes | CONNECTED No Alerts |
| Modbus Control Unit - ReadPumpSetpoint | 945493364827 | | 0 | L/day | 1/12/2021, 2:47:45 PM | 15 minutes | CONNECTED No Alerts |
| Modbus Control Unit - PumpSpeed | 945493364827 | | 4.2 | rpm | 1/12/2021, 2:47:45 PM | 15 minutes | CONNECTED No Alerts |
| Modbus Control Unit - BatteryLevel | 945493364827 | | 11.63 | V | 1/12/2021, 2:47:45 PM | 15 minutes | CONNECTED No Alerts |
| Modbus Control Unit - BatteryCharge | 945493364827 | | 0 | A | 1/12/2021, 2:47:45 PM | 15 minutes | CONNECTED No Alerts |
| Modbus Control Unit - MotorRun | 945493364827 | | 0.3 | A | 1/12/2021, 2:47:45 PM | 15 minutes | CONNECTED No Alerts |
| Modbus Control Unit - AmbientTemp | 945493364827 | | 59.8 | C | 1/12/2021, 2:47:45 PM | 15 minutes | CONNECTED No Alerts |
| Modbus Control Unit - Tank Level | 945493364827 | | 0.994 | in | 1/12/2021, 2:47:45 PM | 15 minutes | CONNECTED No Alerts |
| Modbus Control Unit - WatchdogCounter | 945493364827 | | 0 | sec | 1/12/2021, 2:47:45 PM | 15 minutes | CONNECTED No Alerts |
| Modbus Control Unit - PumpOutputVolume | 945493364827 | | 0 | L/day | 1/12/2021, 2:47:45 PM | 15 minutes | CONNECTED No Alerts |
| Modbus Control Unit - ActiveAlarm | 945493364827 | | 0 | V | 1/12/2021, 2:47:45 PM | 15 minutes | CONNECTED No Alerts |
| Modbus Control Unit - TankLevel | 945493364827 | | 0 | V | 1/12/2021, 2:47:45 PM | 15 minutes | CONNECTED No Alerts |
| Modbus Control Unit - Total pump run time | 945493364827 | | 0 | min | 1/12/2021, 2:47:45 PM | 15 minutes | CONNECTED No Alerts |
| Modbus Control Unit - F100 Location | 945493364827 | | no-data-no-data | lat,lng | 1/12/2021, 3:02:29 PM | less than a minute | NO REPORT |

Simple Interactive Controls

Available on Iphone and Android

