

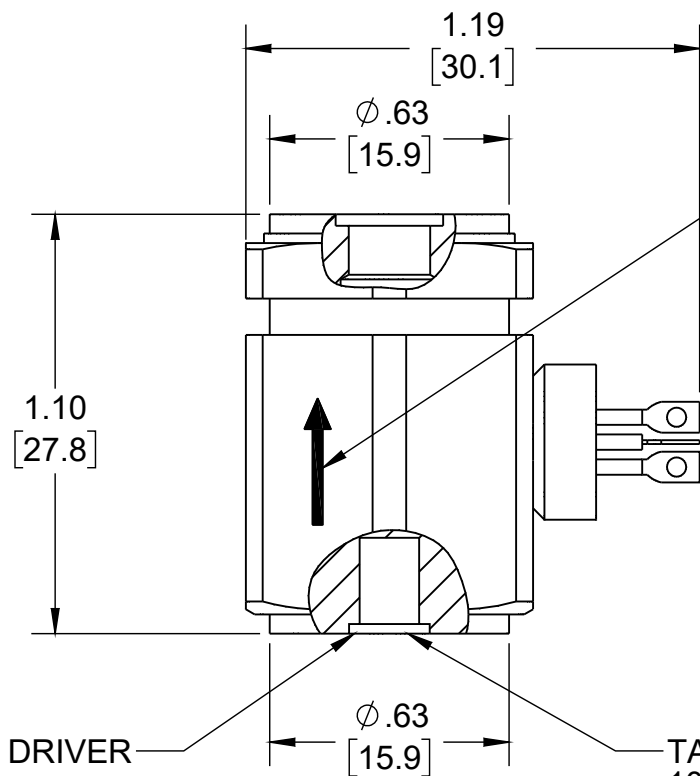
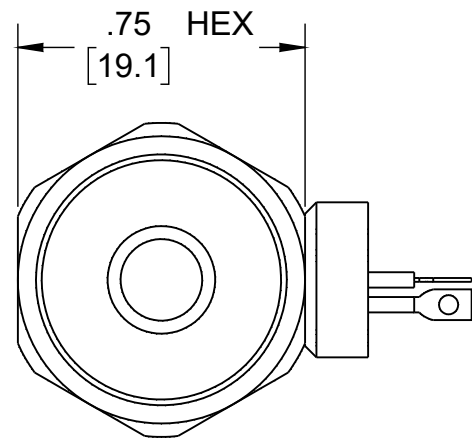
PROPRIETARY AND CONFIDENTIAL

THE INFORMATION CONTAINED IN THIS DRAWING IS THE SOLE PROPERTY OF DYTRAN INSTRUMENTS INC. ANY REPRODUCTION IN PART OR AS A WHOLE WITHOUT THE WRITTEN PERMISSION OF DYTRAN INSTRUMENTS INC. IS PROHIBITED

DWGNO 127-3038A SH 1 REV B

REVISIONS

REV.	ECN	DESCRIPTION	BY/DATE	CHK	APPR
B	16383	CONVERTED FROM ASHLAR TO SOLIDWORKS. OVERALL HEIGHT CHANGED BECAUSE OF ADDED FLANGE IN 107-0999	AS 10/12/21	HM 10/14/21	DV



FASTEN TEST INSTRUMENT TO THIS END

SENSE AND DIRECTION OF ACCELERATION FOR POSITIVE GOING OUTPUT SIGNAL

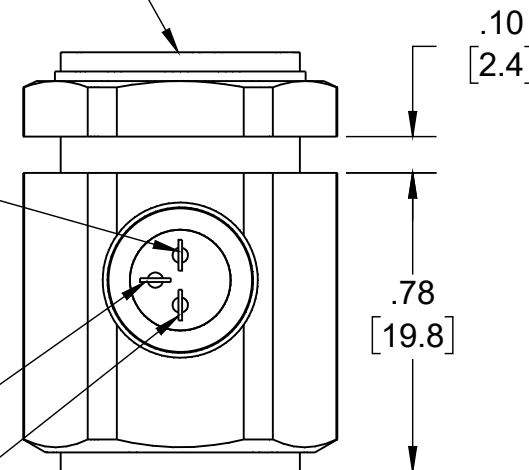
FASTEN THIS END TO DRIVER

TAPPED HOLE 10-32 UNF-2B X .180 DEEP

CASE GND TERMINAL

SIGNAL/PWR TERMINAL

SIGNAL/POWER GND TERMINA



2. MATERIAL: HOUSING - TITANIUM, MOUNTING SURFACE - STAINLESS STEEL

1. WEIGHT - 35 GRAMS

NOTES: UNLESS OTHERWISE SPECIFIED

UNLESS OTHERWISE SPECIFIED:
 INTERPRET DIM & TOL PER ASME Y14.5M - 1994.
 REMOVE BURRS.
 COUNTERSINK INTERNAL THDS 90° TO MAJOR DIA.
 CHAM EXT THDS 45° TO MINOR DIA.
 THD LENGTHS AND DEPTHS ARE FOR MIN FULL THDS.
 DIMENSIONS APPLY AFTER FINISHING.

ALL MACHINED SURFACES: ⁶³/_√
 TOTAL RUNOUT WITHIN .005.
 BREAK SHARP EDGES .005 TO .010.
 MACHINED FILLET RADII .005 TO .015.
 WELDING SYMBOLS PER AWS A2.4.
 ABBREVIATIONS PER MIL-STD-12.

UNLESS OTHERWISE SPECIFIED:
 DIMENSIONS ARE IN INCHES.
 DIMENSIONS IN BRACKETS [] ARE IN MILLIMETERS TOLERANCES ARE:

DECIMALS	METRIC	ANGLES
.XX ±.03	.X ±.08	±1°
.XXX ±.010	.XX ±0.25	

APPROVALS		DATE
ORIG	D.Z.	7/1/96
CHK	NC	7/1/96
APP	N.C.	7/1/96

DO NOT SCALE DRAWING



TITLE: OUTLINE/INSTALLATION DRAWING, MODEL 3038A

SIZE	CAGE CODE	DWG NO	REV
B	2W033	127-3038A	B

SCALE: 2:1 SHEET 1 OF 1

SPECIFICATIONS

MODEL 3038A VIBRATION CALIBRATION ACCELEROMETER

SPECIFICATION	VALUE	UNITS
SENSITIVITY, $\pm 10\%$	10.0	mV/G
RANGE, ACCELERATION, FOR ± 5 V OUT	500	G
RANGE, FORCE-LBS	40	FORCE-LBS
FREQUENCY RESPONSE, $\pm 5\%$ [1]	1 to 10,000	Hz
LINEARITY	± 1	% FS
TRANSVERSE SENSITIVITY, MAX	3	%
DISCHARGE TIME CONSTANT	0.5	SEC.
EQUIVALENT NOISE FLOOR	.007	G
RESISTANCE, GND PIN TO CASE, MIN.	10	MEGOHMS
DC BIAS LEVEL OF INTERNAL IC AMPLIFIER	10	VDC
OUTPUT IMPEDANCE OF INTEGRAL AMPLIFIER	100	OHMS
INPUT CURRENT RANGE [2]	2-5	mA
COMPLIANCE VOLTAGE	+18 to +30	VDC
TEMPERATURE RANGE	-65 to +250	DEG F
COEFFICIENT OF THERMAL SENSITIVITY	.03	%/DEG F
HOUSING MATERIAL (NON-MAGNETIC)	TITANIUM	
ELECTRICAL CONNECTOR, TRANSVERSE MTD.	3-PIN SOLDER TERMINAL HEADER	
MOUNTING HOLES: TOP	1/4-28	UNF-2B
BOTTOM	10-32	UNF-2B
WEIGHT	35	GRAMS
HEIGHT X HEX	1.18 X .75	IN

[1] THIS SPECIFICATION VALID ONLY WITH TEST ACCELEROMETER MASS OF UP TO 20 GRAMS. MASS LOADING CURVES MUST BE CONSTRUCTED TO MAKE UP FOR CHANGES IN RESPONSE DUE TO MASS LOADING OF ACCELEROMETER.

[2] MUST BE USED WITH CONSTANT CURRENT TYPE POWER SOURCE. DO NOT CONNECT POWER SOURCE TO ACCEL. WITHOUT CURRENT LIMITING. THIS WILL DESTROY THE INTERNAL AMPLIFIER.