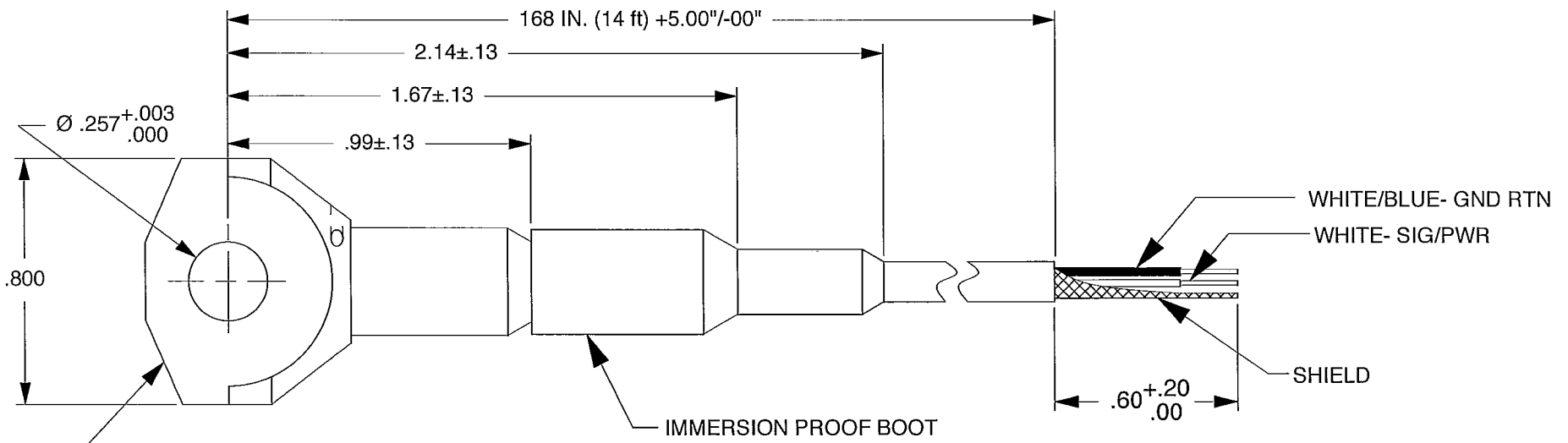
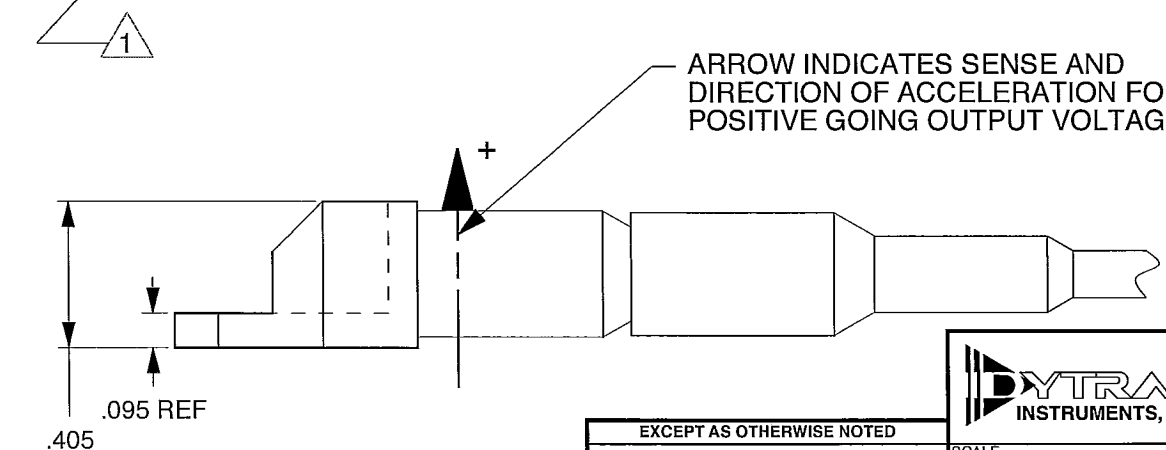


REV	ECN	DESCRIPTION	BY/DATE	CHK	APPR
F	9402	ADDED NOTE 1. HOUSING MATERIAL: 300 SERIES STAINLESS STEEL	RA 11/30/12	EM 12/4/12	DV



CABLE JACKET  
MAT'L: TEFZEL

ARROW INDICATES SENSE AND  
DIRECTION OF ACCELERATION FOR  
POSITIVE GOING OUTPUT VOLTAGE



1 HOUSING MATERIAL: 300 SERIES  
STAINLESS STEEL.

EXCEPT AS OTHERWISE NOTED  
ALL DIMENSIONS IN INCHES  
TOLERANCE: .XXX = ± .005 .XX = ± .010  
SURFACE FINISH EXCEPT AS NOTED ✓  
BREAK EDGES TO DEBURR  
RADIUS OR CHAMFER  
THESE DIAS ⊕ TO - T.I.R.  
FILLETS - - MAX RAD.

		<b>MASTER ONLY IF IN RED</b>		CHATSWORTH, CA.	
SCALE	2X	REV	DATE	ECN	SEE REV BLK
DATE	2/26/02	PART NO. MODEL 3079A			
DRAWN	N.C.	CHECKED	R.A.	MAT'L -	
APPROVED	N.C.	5/14/03	NEXT ASSEMBLY		USED ON 3079A
TITLE					DWG NO.
OUTLINE INSTALLATION DRAWING, MODEL 3079A					127-3079A
					SHEET 1 OF 1

	<b>IEPE ACCELEROMETER</b>	REV C, ECN 14311, 06/26/18
--	---------------------------	----------------------------



- HERMETICALLY SEALED
- EXCELLENT LINEARITY

**PHYSICAL**  
 Weight (Less Cable), Max  
 Integral Cable, Radially Mounted  
 Mounting Provision  
 Material, Housing/Connector  
 Sensing Element  
 Cable Jacket Material

ENGLISH		SI	
0.4	oz	11	grams
2-Wire, Pigtailed End		2-Wire, Pigtailed End	
Ø .257 Thru Hole	in	Ø 6.52 Thru hole	mm
300 Series Steel		300 Series Steel	
Quartz		Quartz	
Tefzel		Tefzel	

**PERFORMANCE**  
 Sensitivity, ±5% [1]  
 Range for ± 5 Volts Output  
 Frequency Response, ± 10%  
 Resonant Frequency  
 Broad Band Resolution [4]  
 Linearity [2]  
 Maximum Transverse sensitivity  
 Strain Sensitivity @ 250µε

10	mV/g	1.02	mV/m/s <sup>2</sup>
500	g	4905	m/s <sup>2</sup>
1.1 to 3000	Hz	1.1 to 3000	Hz
>26	kHz	>26	kHz
0.007	grms	0.069	m/s <sup>2</sup> rms
±1	% F.S.	±1	% F.S.
5	%	5	%
0.012	g/µε	0.12	m/s <sup>2</sup> /µε

**ENVIRONMENTAL**  
 Maximum Vibration  
 Maximum Shock  
 Temperature Range  
 Seal

600	gpeak	5886	m/s <sup>2</sup> peak
3000	gpeak	29430	m/s <sup>2</sup> peak
-60 to +250	°F	-51 to +121	°C
Hermetic		Hermetic	

**ELECTRICAL**  
 Supply Current Range [3]  
 Compliance Voltage Range  
 Output Impedance, Max  
 Bias Voltage  
 Discharge Time Constant  
 Electrical Isolation, Case grounded to the mounting surface

2 to 20	mA	2 to 20	mA
+18 to +30	Volts	+18 to +30	Volts
100	Ω	100	Ω
7 to 9	VDC	7 to 9	VDC
0.3 to 0.8	Sec	0.3 to 0.8	Sec
10	GΩ,min	10	GΩ,min

**This family also includes:**

Model	Sensitivity (mV/g)	Frequency Response (Hz)	Time Constant (Sec)	Operating Temp (°F)

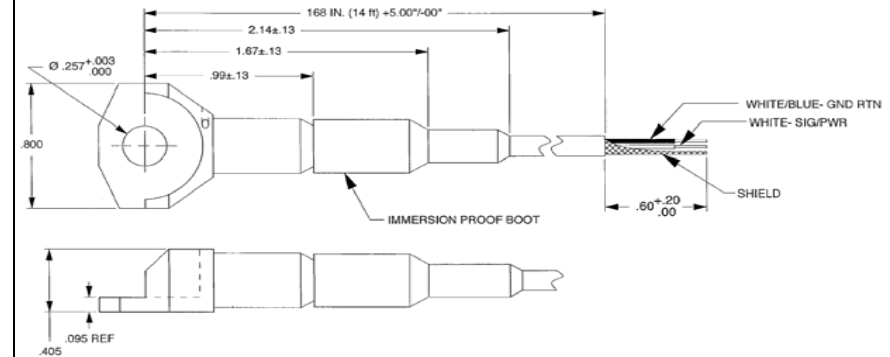
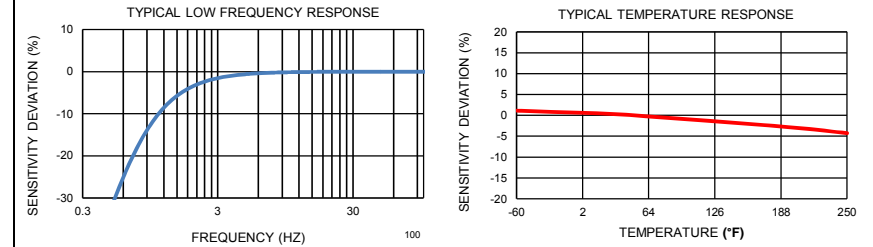
Refer to the performance specifications of the products in this family for detailed description

**Supplied Accessories:**

- 1) Accredited calibration certificate (ISO 17025)

**Notes:**

- [1] Measured at 100Hz, 1 grms per ISA RP 37.2.
- [2] Measure using zero-based straight line method, % of F.S. or any lesser range.
- [3] Do not apply power to this system without current limiting, 20 mA MAX. To do so will destroy the IC charge amplifier.
- [4] Typical. Not to exceed 0.010 Grms [0.10 ms<sup>-2</sup>].



Units on the line drawing are in inches, units in brackets are in millimeters. Refer to 127-3079A for more information.

