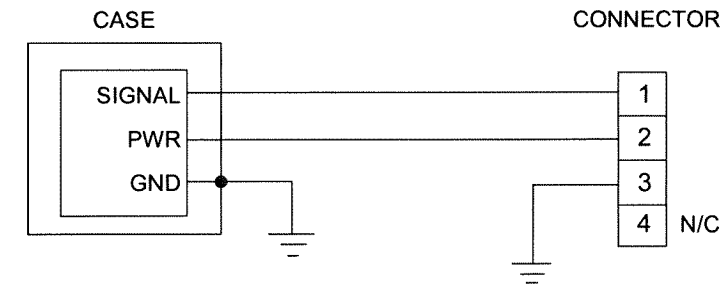
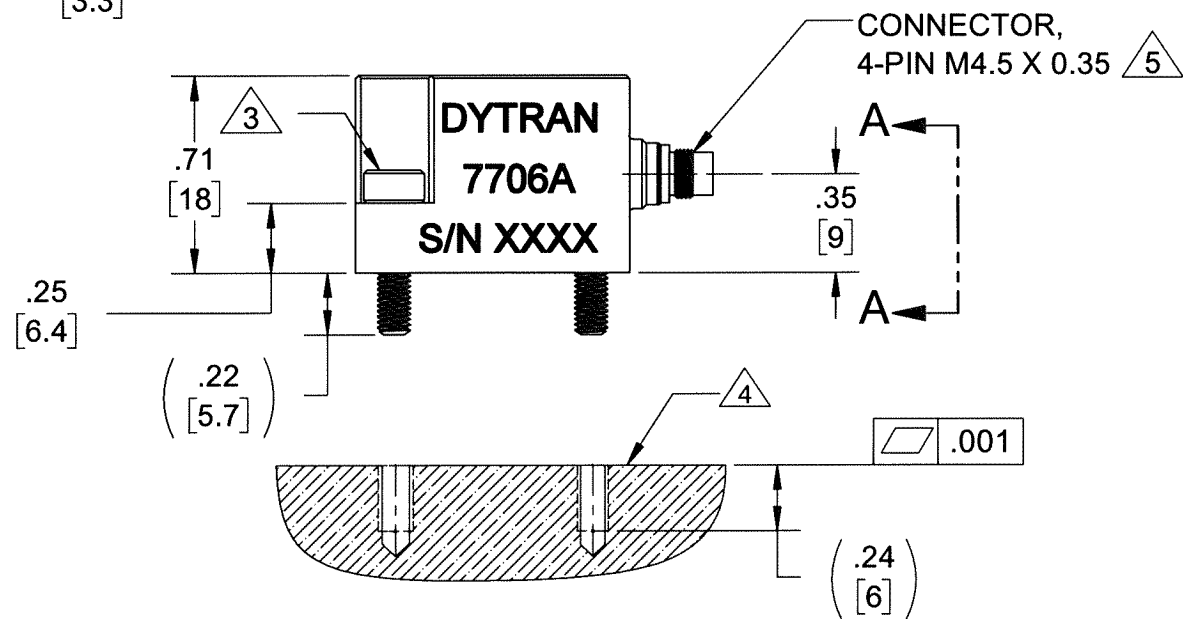
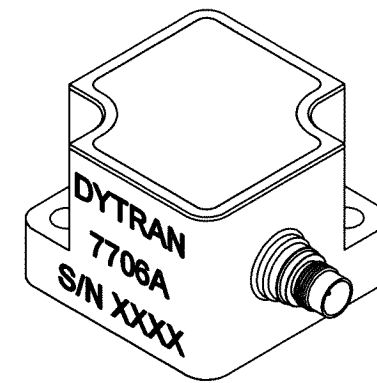
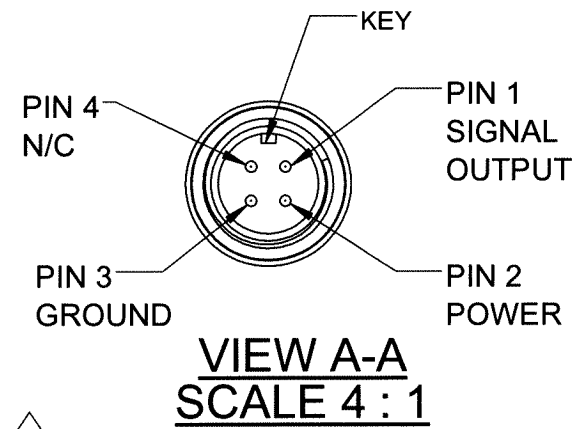
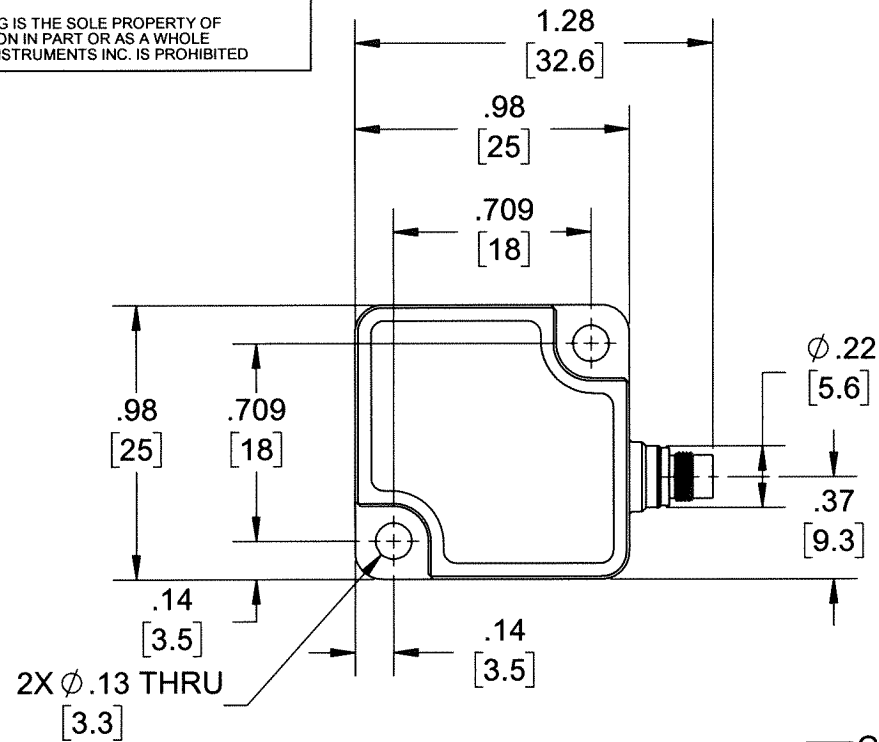


PROPRIETARY AND CONFIDENTIAL

THE INFORMATION CONTAINED IN THIS DRAWING IS THE SOLE PROPERTY OF DYTRAN INSTRUMENTS INC. ANY REPRODUCTION IN PART OR AS A WHOLE WITHOUT THE WRITTEN PERMISSION OF DYTRAN INSTRUMENTS INC. IS PROHIBITED

REVISIONS

REV.	ECN	DESCRIPTION	BY/DATE	CHK	APPR
A	14481	INITIAL RELEASE, SAME AS X2	RA 09/12/18	MH	WS



SCHEMATIC DIAGRAM

- 5 MATES WITH MODEL 6776AXX 4 PIN TO (2) BNC OR 6895AXX 4 PIN TO CUT OFF CABLE (XX=LENTH IS FEET)
 - 4 MOUNTING RECOMMENDATIONS: PREPARE FLAT MOUNTING SURFACE EQUAL OR BETTER THAN .001 TIR. (TAP 2X M3x0.5 ∇.24 [6.0] MIN.) RECOMMENDED TORQUE 6-8 LB-IN [0.68 - 0.90 N-m].
 - 3 MOUNTING SCREWS: MODEL 69040, M3x0.5 x 12mm, WITH NYLON THREAD-LOCKING QTY 2, SUPPLIED
 - 2. WEIGHT: 35 GRAMS MAX.
 - 1. HOUSING MATERIAL: TITANIUM
- NOTES: UNLESS OTHERWISE SPECIFIED

UNLESS OTHERWISE SPECIFIED: INTERPRET DIM & TOL PER ASME Y14.5M - 1994. REMOVE BURRS. COUNTERSINK INTERNAL THDS 90° TO MAJOR DIA. CHAM EXT THDS 45° TO MINOR DIA. THD LENGTHS AND DEPTHS ARE FOR MIN FULL THDS. DIMENSIONS APPLY AFTER FINISHING.		UNLESS OTHERWISE SPECIFIED: DIMENSIONS ARE IN INCHES DIMENSIONS IN BRACKETS [] ARE IN MILLIMETERS TOLERANCES ARE: DECIMALS METRIC ANGLES .XX ± .03 X ± 0.8 ° ± 1° .XXX ± .010 .XX ± 0.25		MASTER ONLY IF IN RED DYTRAN INSTRUMENTS, INC. Chatsworth, CA	
APPROVALS		DATE		TITLE:	
ORIG	RA	08/08/18		OUTLINE/INSTALLATION DWG, MODEL 7706A	
CHK	MH	9/12/18			
APP	WS	9/12/18			
ALL MACHINED SURFACES. 63/ TOTAL RUNOUT WITHIN .005. BREAK SHARP EDGES .005 TO .010. MACHINED FILLET RADII .005 TO .015. WELDING SYMBOLS PER AWS A2.4. ABBREVIATIONS PER MIL-STD-12.		DO NOT SCALE DRAWING		SIZE B	CAGE CODE 2W033
		THIRD ANGLE PROJECTION		DWG NO 127-7706A	REV A
				SCALE: 3:2	SHEET 1 OF 1

Model Number 7706M1	PERFORMANCE SPECIFICATIONS	DOC NO PS7706A
DUAL ELEMENT ACCELEROMETER		REV A, ECN 14481, 09/13/18



- **DUAL ELEMENT TECHNOLOGY**
- **EXTENDED LOW FREQUENCY RESPONSE (0 Hz to 10kHz)**
- **HERMETICALLY SEALED**

This accelerometer combines the DC output of variable capacitance element with excellent high frequency response of piezoelectric element
Both outputs are electrically summed up and seamlessly superimposed on each other to provide the broadest frequency response from a single output pin.

PHYSICAL

Weight, Max.
Mounting
Connector
Housing

Type
Material

ENGLISH		SI	
1.2	oz	35	grams
2X M3 Screws		2X M3 Screws	
M4.5 X .35, 4-PIN		M4.5 X .35, 4-PIN	
Titanium		Titanium	

PERFORMANCE

Sensitivity, ±10% [1]
Acceleration Range
Frequency Response, ±10%
Resonance Frequency
Linearity [2]
Transverse Sensitivity
Output Noise, Broadband, Max.
Phase shift mismatch, Max
Absolute phase shift, Max [3]
Base Strain Sensitivity, Max.
Bias Offset, Max.

35	mV/g	3.6	mV/m/s ²
±50	Gpeak	±491	m/s ² peak
0 to 10,000	Hz	0 to 10,000	Hz
>25	kHz	>25	kHz
1	% F.S.	1	% F.S.
<3	%	<3	%
0.003	Grms	0.03	m/s ² rms
±2	degrees	±2	degrees
±5	degrees	±5	degrees
0.0004	g/με	0.0039	m/s ² /με
0.2	g's	1.96	m/s ²
	±		

ENVIRONMENTAL

Maximum Mechanical Shock
Bias Temperature Shift, Max
Bias Calibration Error
Operating Temperature
Thermal Coefficient
Seal

5,000	Gpeak	49,050	m/s ²
56	(ppm of span)/°F	101	(ppm of span)/°C
1.5	% of span	1.5	% of span
-40 to +250	°F	-40 to 121	°C
0.06	%/°F	0.12	%/°C
Hermetic		Hermetic	

POWER

Compliance Voltage
Current Range
Output Bias Voltage, Typical
Output Impedance, Nom.
Power Supply Rejection Ratio

+5 to +20	VDC	+5 to +20	VDC
5 to 10	mA DC	5 to 10	mA DC
2.45	VDC	2.45	VDC
100	Ω	100	Ω
>65	dB	>65	dB

This family also includes:

Model	Sensitivity (mV/g)	Range (Gpeak)	Maximum Shock (Gpeak)	Noise Broadband (grms)

Refer to the performance specifications of the products in this family for detailed description

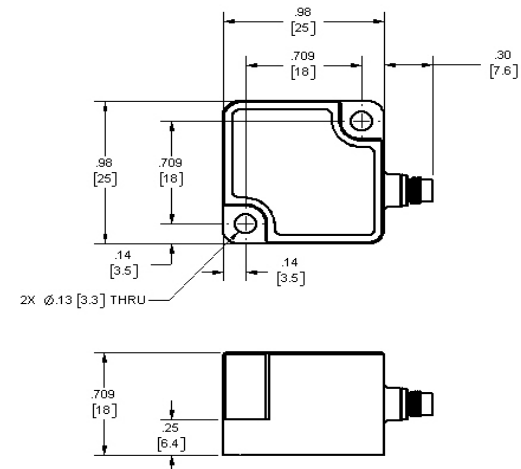
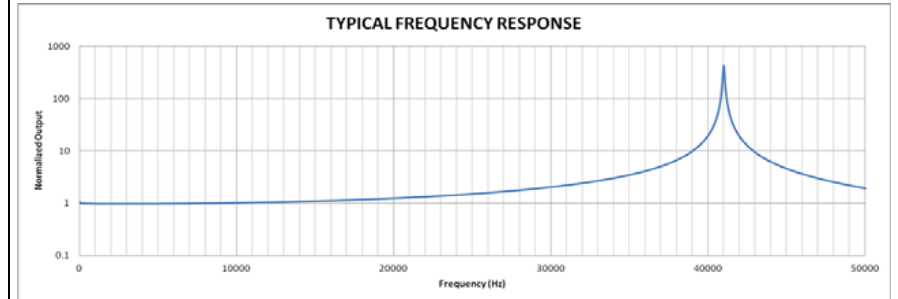
Supplied Accessories:

- 1) Accredited calibration certificate (ISO 17025)

Notes:

- [1] Measured at 100Hz, 1 Grms per ISA RP 37.2.
- [2] Measure using zero-based straight line method, % of F.S. or any lesser range.
- [3] 0 to 1000Hz

[4] In the interest of constant product improvement, we reserve the right to change specifications without notice.



Units on the line drawing are in inches, units in brackets are in millimeters. Refer to 127-7706M1 for more information.



21592 Marilla Street, Chatsworth, California 91311 Phone: 818.700.7818 Fax: 818.700.7880 www.dytran.com
For permission to reprint this content, please contact info@dytran.com