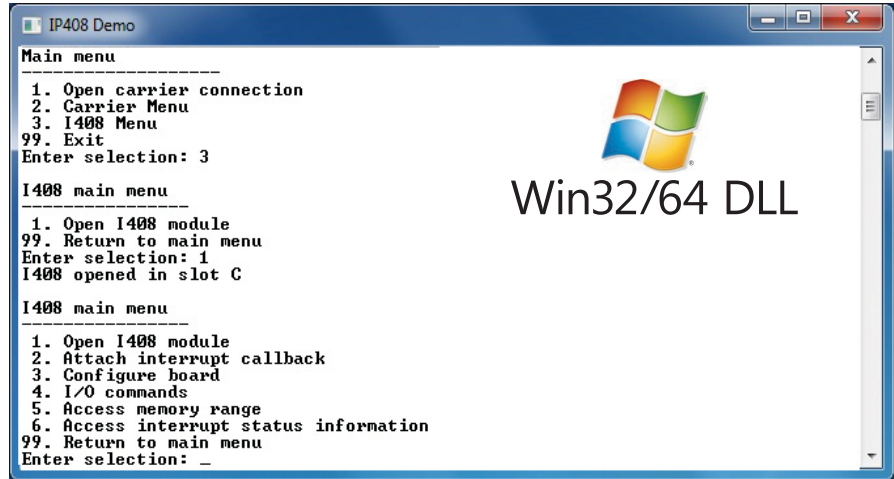
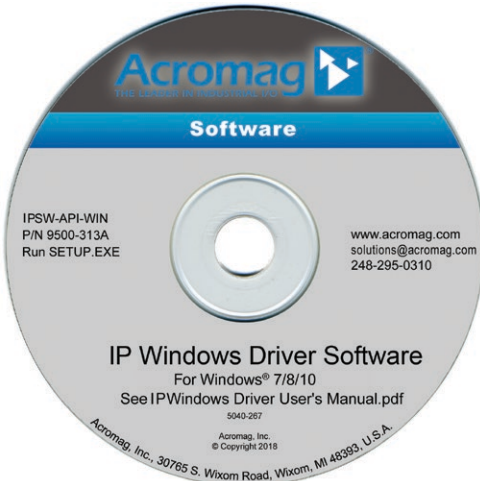


# Software Support

## IPSW AcroPack® and Industry Pack Driver Software for Windows® Operating Systems



For Windows 10 / 8 / 7 ♦ Supports Acromag AcroPack & Industry Pack modules & carriers ♦ Includes DLLs

### Description

#### Application Programming Interface

Acromag's software development tools greatly simplify the interface between the I/O boards and your Windows-based application program. These packages provide DLL driver level support for Acromag's line of Industry Pack products. In addition, "C" source demonstration programs provide easy-to-use tools to test the operation of the module.

#### Demonstration Programs

Powerful programs let you fully exercise your hardware before developing the actual application. These diagnostics will save you hours troubleshooting and debugging your applications. You can set addresses, set up registers, read real-world inputs, or drive outputs. The demonstration programs step you through the exact functions that are called in your application.



### Key Features & Benefits

- Easy installation procedure
- Documentation with step-by-step instructions
- Support for active Acromag Industry Pack I/O and Industry Pack FPGA modules and carriers
- Support for 32-bit and 64-bit systems
- Demonstration Programs
- Driver level support for desktop and embedded Windows level programming environments
- Compatible with Windows Embedded Standard applications
- Verifies operation of your I/O boards with a demonstration program to ensure proper hardware performance before attaching your application

### User-Friendly Licensing

Acromag's PCI Windows driver software is provided with a full site license. This allows anyone at your location to use this software without any additional charges. No run-time license is required.

You do not need to order additional software for different models within the family.

### Ordering Information

#### ■ Software

For more information, see [www.acromag.com](http://www.acromag.com).

#### [APSW-API-WIN](#)

64-bit and 32-bit Windows® DLL driver and demonstration software for AcroPack Modules and PCIe carriers on CD ROM.

#### [IPSW-API-WIN](#)

64-bit and 32-bit Windows® DLL driver and demonstration software for Industry Pack Modules, PCI, and cPCI carriers.

#### [IPSW-VME-WIN](#)

64-bit and 32-bit Windows® driver software package for Industry Pack modules with DLLs and demonstration programs for VME carrier models. Works with TS1148 chipset including the XVME-6300 and XVME-6400. Supplied on CD-ROM.

#### [IPSW-A7VME-WIN](#)

64-bit and 32-bit Windows software package for Industry Pack modules and VME carriers. Works with Acromag Series XVME6500 and XVME6700 SBCs. Supplied on CD-ROM.

*NOTE: For PMC, XMC, PCI, and cPCI modules and carrier cards support software, please refer to PCISW-API-WIN.*

884-878-2352 ■ solutions@acromag.com ■ www.acromag.com ■ 30765 Wixom Rd, Wixom, MI 48393 USA