

The Harmony
of
Solutions



RL-C25 is an advanced highly-accurate vibration control and data acquisition system designed for multichannel applications.

Scalable architecture allows the user to expand the system up to 512 channels in a synchronized data acquisition set.

RL-C25 comes with a full set of vibration and acoustic measurements and supports various sensor types.

Two advanced software packages – **VisProbe SL** and **VisAnalyser** – power the system to fulfill the vibration control and data acquisition functionality.

The modular principle of hardware configuration provides flexibility to suit different user demands. The following variants of configuration are available: 24/0, 16/4, 8/8 (in/out channels per controller).

Main parameters:

- Scalability up to 512 input channels
- Digital interfaces: Ethernet, USB, RS-232, RS-485, CAN 2.0
- Online and offline analysis
- Digital inputs and outputs
- Desktop instrument or 19' rack
- 3 years of warranty

Hardware Features

Number of input channels	1 - 512 (up to 24 channels per controller)
Number of output channels	0 - 8
Frequency range, Hz	DC, 0.1 - 106000
ADC/DAC resolution, bit	24
Sample rate, kHz	up to 265
Dynamic range, dB	120
Sensor types	IEPE, linear, charge, acoustic, displacement, velocity, force sensors
Number of digital inputs	8
Number of digital outputs	8
Temperature range, °C	+5 – +45
Power consumption for one controller, VA	≤75
Supply voltage, V	180 - 240 AC 12 - 36 DC
Dimensions, mm	428 × 370 × 47
Weight, kg	3.9



«RULA Technologies», SIA
Birzes Iela 32-57, RIGA,
LV-1016 Latvia

Phone: +371 6610 2166
e-mail: contact@rula-tech.com
<http://rula-tech.com>



Vibration Control and Data Acquisition System **RL-C25**



Vibration Test Types:

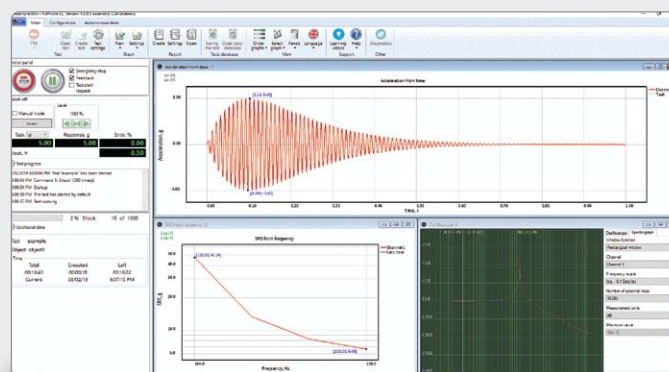
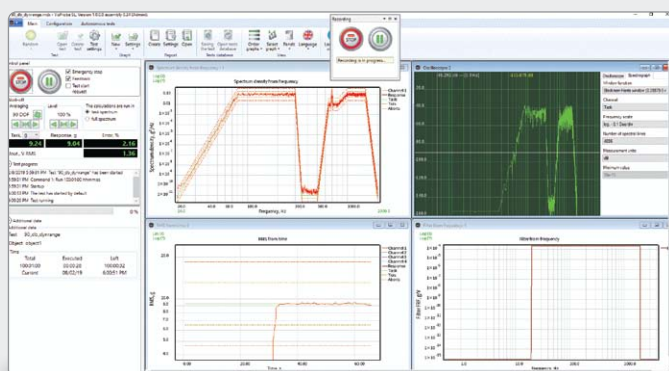
- Sine, Resonance Search and Tracking, Multitone Sine
- Random
- Shock
- Shock Response Spectrum
- Transient Time History
- SRoR
- Field Data Replication
- Transient Capture
- Fatigue Tests
- Multishaker Tests

Data Analysis Types:

- Spectral Analysis
- Octave Analysis
- Statistic Analysis
- Shock Response Spectrum
- Cross-Spectrum
- Waterfall Analysis
- FRF Analysis
- Modal Analysis
- Tacho-Analysis
- Arithmetic Operations
- Filtration

Fields of Application:

- Vibration tests according to ISO, DIN, IEC, etc. in Aerospace, Automotive, Power&Energy and other industries
- Acquisition and analysis of vibration, acoustic, temperature, voltage and other data
- Research and Development
- Fatigue tests



«RULA Technologies», SIA
Birzes Iela 32-57, RIGA,
LV-1016 Latvia

Phone: +371 6610 2166
e-mail: contact@rula-tech.com
<http://rula-tech.com>

