



EON Instrumentation Inc.

15531 Cabrito Road
Van Nuys, CA 91406
818-781-2187

www.eoninstrumentation.com

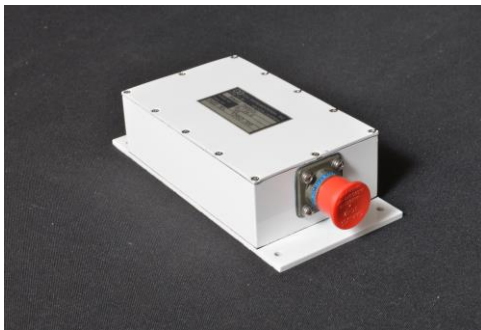
Updated April 23, 2017

Product Data Sheets

DC-DC Power Supply Family



Model Numbers: M22820-2, M139-5
(28vdc; mult pwr/outputs/voltages)



Model Number: M139-4
28vdc; 25w,2out,+/-15



MB228X-Y-Z
(28vdc; x-pwr, y-outputs, z-voltages)

MB1RSX-Y-Z
(various vac input; x,y,z as above)

General

The M22820-2 (-x) accepts 28vdc nominal input and provides +/- 15vdc output up to 10 w each. The M22820-2 replaces the Eon M139-5. Output voltages (x) can be +/- 3.3vdc, 5vdc, 12vdc or 15vdc and higher wattage if desired. Boards without chassis are also available.

Configuration

See Outline and Mounting Drawing.

Specifications for Standard Unit

Finish: Aluminum Chassis with Chem Film Finish, One 6 pin MS3899 connector

Input Voltage Range: 18-36 VDC

Input Power (nominal): varies with model. Efficiency 85 – 95%

Weight: 0.4 lbs to 3lbs depending on model

Meets (Qual by Similarity, data available upon request):

Power: Mil-Std-704, 1275

EMI: Mil-Std-461

Temperature:

Operating: -40 to +70C

Storage: -54 to +85C

Shock:

Operating: 20 G's

Crash Safety: 40 G's

Altitude: Non-Pressurized Area, Cl 1 per MIL-E-5400T (0-50,000Ft)

Humidity: Humidity, Cl 1 per MIL-E-5400T

MIL-STD-810E Method 507.3, Procedure III (Aggravated), 10ea 24 hr cycles

Salt Fog: MIL-STD-810E Method 509.3, Procedure I

Sand and Dust: MIL-STD-810E Method 510.3, Procedure I

Acceleration: +/-9 G's

Endurance Sine on Random Vibration:

MIL-STD-810E

0.103 G2/Hz (15-500Hz)

Sine Tones:

102Hz, 8.38G's Peak

204Hz, 7.45G's Peak

306Hz, 6.99G's Peak

408Hz, 6.97G's Peak

Operating: 3.0 hrs ea axis

Rapid Decompression: MIL-STD-810E Method 500.3 para II-3.3 Procedure III

Rain: MIL-STD-810E Method 506.3, Procedure II (Drip)

Outline and Mounting Drawing

REVISIONS			
REV.	ECO	DESCRIPTION	DATE
IR	EC185-00	INITIAL RELEASE	03/23/2017

Dimensions: 0.19, 0.25, 3.00, 2.50, 3.75, 3.38, 4X Ø0.156, 3.00, 1.2, 0.06

PWR-IN/PWR-OUT D38999/20WA35PN

PIN #	SIGNAL
1	+28 VDC IN
2	+28 VDC RETURN
3	CHASSIS GND
4	+15 VDC OUT
5	-15 VDC OUT
6	OUTPUT RETURN

NOTES:

- MAX OUTPUT POWER: 10W @ +15 VDC; 10W @ -15VDC
- HOUSING MATERIAL: CASE: 6063-T52 ALUMINUM; COVERS: 5052-H32 ALUMINUM
- FINISH: CHEM-FILM PER MIL-C-5541; BLACK LEGEND TEXT
- WEIGHT: 0.5 LB NOMINAL

CAD-MAINTAINED. CHANGES SHALL BE INCORPORATED VIA DESIGN ACTIVITY. UNLESS OTHERWISE SPECIFIED, DIMENSIONS ARE IN INCHES (mm)

PROPRIETARY AND CONFIDENTIAL
THE INFORMATION CONTAINED IN THIS DRAWING IS THE SOLE PROPERTY OF EON INSTRUMENTATION, INC. ANY REPRODUCTION IN PART OR AS A WHOLE WITHOUT THE WRITTEN PERMISSION OF EON INSTRUMENTATION, INC. IS PROHIBITED.

EON Instrumentation, Inc.
15531 Cabrito Road • Van Nuys, CA 91406
Tel: +1 (818) 781-2185 • CAGE Code: 22198

TITLE: M22820-2
Outline & Mounting

SIZE	PART NO.	DWG. NO.	REV
A	18500-300	18500-300	IR

SCALE: 3:4