

Product Model: **MM121A Series**

## Piezoelectric IEPE Accelerometer

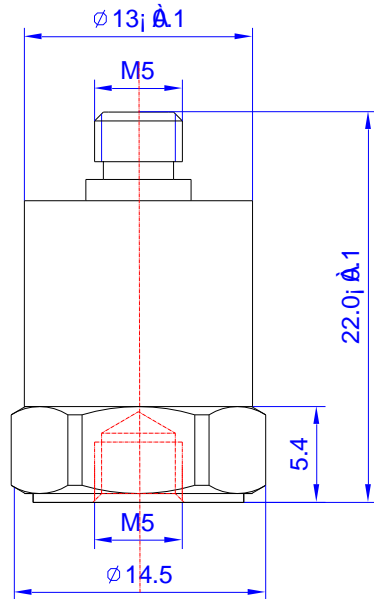
Version: A Date: 17/3/2022

**Sensor Feature:**

Shear design to reduce the influence of the environment on the signal.

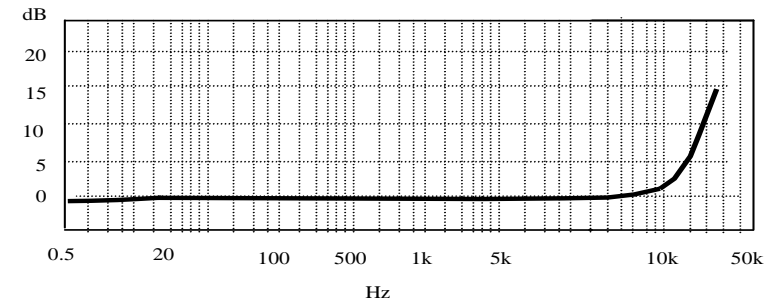
Using wide temperature coefficient ceramic material

Stable output in high and low temperatures

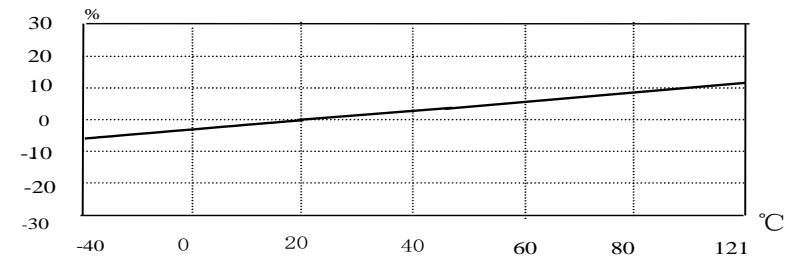


| Model                         | MM121A-50                          |
|-------------------------------|------------------------------------|
| Sensitivity ( $\pm 10\%$ )    | 50 mV/g                            |
| Measurement Range             | $\pm 100$ g                        |
| Resolution                    | 1 mg rms                           |
| Frequency Range ( $\pm 1$ dB) | 0.5-10,000 Hz                      |
| Resonant Frequency            | $\sim 30$ kHz                      |
| Non-linearity                 | $\leq 1\%$                         |
| Temperature Range             | -40 $\sim$ +121 $^{\circ}\text{C}$ |
| Transverse Sensitivity        | $\leq 5\%$                         |
| Excitation Voltage            | +18-+28 VDC                        |
| Excitation Current            | 2 - 10 mA                          |
| Output Impedance              | $< 100 \Omega$                     |
| Output Bias Voltage           | 11 $\pm$ 1.5 VDC                   |
| Sensing Element/Geometry      | Ceramic/Shear                      |
| Size mm                       | As left figure                     |
| Weight                        | $\sim 18$ g                        |
| Mounting                      | M5 (female)                        |
| Housing Material              | Stainless Steel                    |

Frequency Response



Temperature Response



**Metromatics**

ABN: 47 007 346 287

**Accessories**

- 2 Metre Coaxial Shielded Cable 1ea
- Certificate of inspection 1ea + M5 Stud 1ea

25 Flinders Parade, North Lakes QLD 4509, AUSTRALIA  
[www.metromatics.com.au](http://www.metromatics.com.au)      [sales@metromatics.com.au](mailto:sales@metromatics.com.au)  
 Brisbane: +61 7 3868 4255    I    Sydney: +61 2 9460 4355  
 Melbourne: +61 3 9872 4592    I    Adelaide: +61 8 8343 8516

**Remark**

Output Connector – M5 Top