

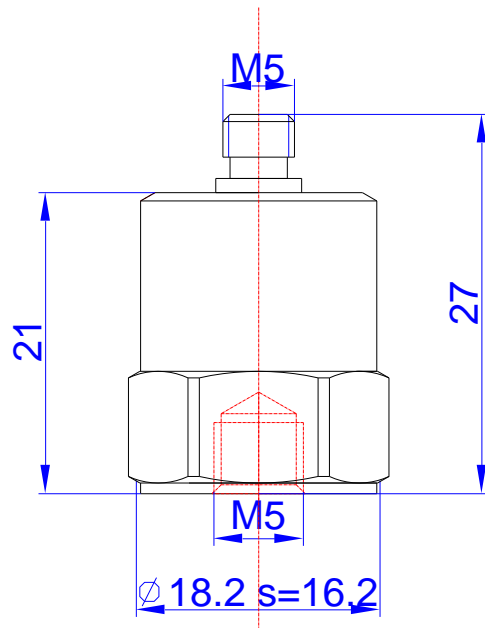
Product Model: **MM2107DM**

High Temperature PE Accelerometer

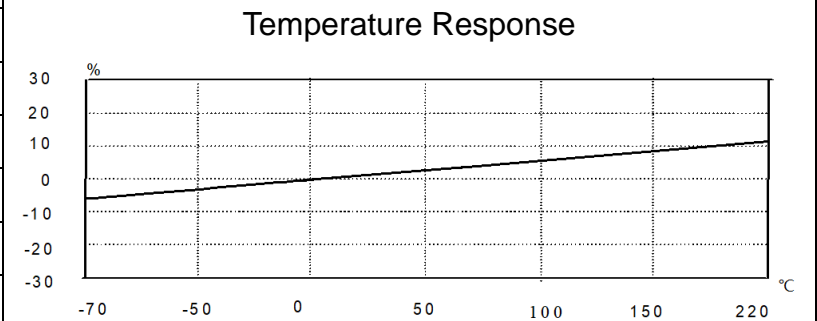
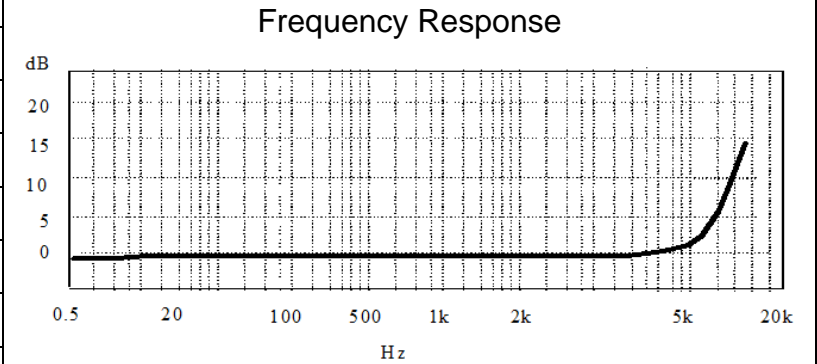
Version: **A** Date: **21/06/2024**

Sensor Feature:

- Shear design to reduce the influence of the environment on the signal
- Using wide temperature coefficient ceramic material
- Stable output in high and low temperature



Performance	MM2107DM
Sensitivity ($\pm 10\%$)	45 pC/g
Measurement Range	$\pm 5,000$ g
Frequency Range(± 1 dB)	6,500 Hz
Resonant Frequency	~ 25 kHz
Non-linearity	$\leq 1\%$
Transverse Sensitivity	$\leq 5\%$
Temperature Range	-70 \sim +220 °C
Insulation Resistance	$\geq 10^8 \Omega$
Sensing Element/Geometry	Ceramic/Shear
Size mm	As left figure
Weight	~ 32 g
Mounting	M5 (Female)
Output Connector	Integral Cable
Housing Material	Stainless Steel
Sealing	Welded



Metromatics

ABN: 47 007 346 287

Accessories	<ul style="list-style-type: none"> • Low noise integral cable 1ea 3m • Certificate of inspection 1ea • M5 stud 1ea
-------------	---

Remark	
--------	--

25 Flinders Parade, North Lakes QLD 4509, AUSTRALIA
www.metromatics.com.au sales@metromatics.com.au
 Brisbane: +61 7 3868 4255 | Sydney: +61 2 9460 4355
 Melbourne: +61 3 9872 4592 |