

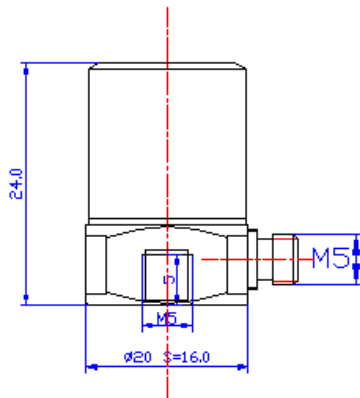
Product Model: MM272A series

## High Temperature PE Accelerometer

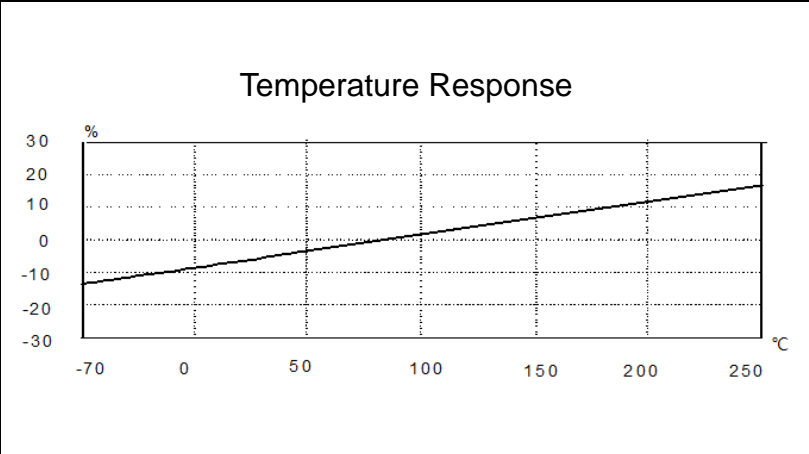
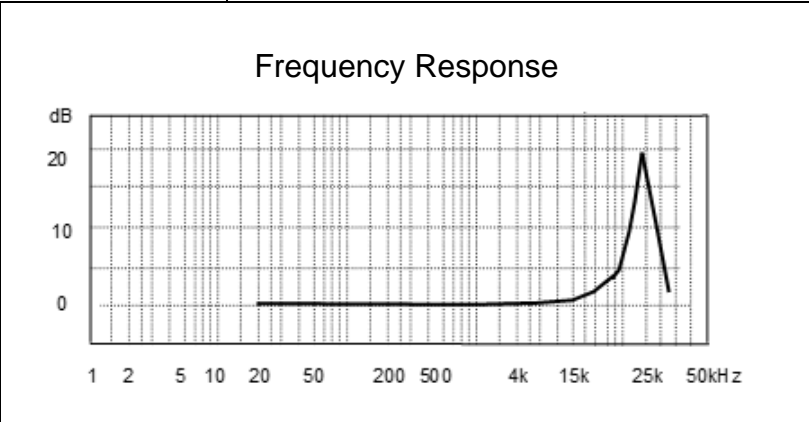
Version: **A** Date: **25/5/2023**

**Sensor Feature:**

- Shear design to reduce the influence of the environment on the signal
- Using wide temperature coefficient ceramic material
- Stable output in high and low temperature



Performance	MM272A-10
Sensitivity ( $\pm 10\%$ )	10 pC/g
Measurement Range	$\pm 2000$ g
Frequency Range ( $\pm 1$ dB)	8,000 Hz
Resonant Frequency	$\sim 24$ kHz
Non-linearity	$\leq 1\%$
Transverse Sensitivity	$\leq 5\%$
Temperature Range	$-70 \sim +250$ °C
Insulation Resistance	$\geq 10^9 \Omega$
Sensing Element/Geometry	Ceramic/Shear
Size mm	As left figure
Weight	$\sim 20$ g
Mounting	M5 (Female)
Output Connector	M5 Side
Housing Material	Stainless Steel
Sealing	Welded



**Metromatics**

ABN: 47 007 346 287

Accessories

- Low noise cable 1ea 2m
- Certificate of inspection 1ea
- M5 stud 1ea

Remark

25 Flinders Parade, North Lakes QLD 4509, AUSTRALIA  
[www.metromatics.com.au](http://www.metromatics.com.au)      [sales@metromatics.com.au](mailto:sales@metromatics.com.au)  
 Brisbane: +61 7 3868 4255    |    Sydney: +61 2 9460 4355  
 Melbourne: +61 3 9872 4592    |    Adelaide: +61 8 8343 8516