

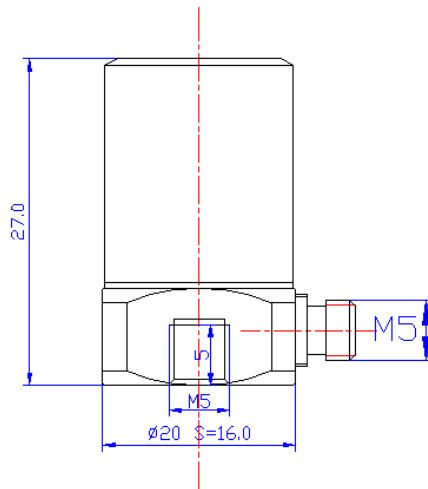
Product Model: **MM272A series**

High Temperature PE Accelerometer

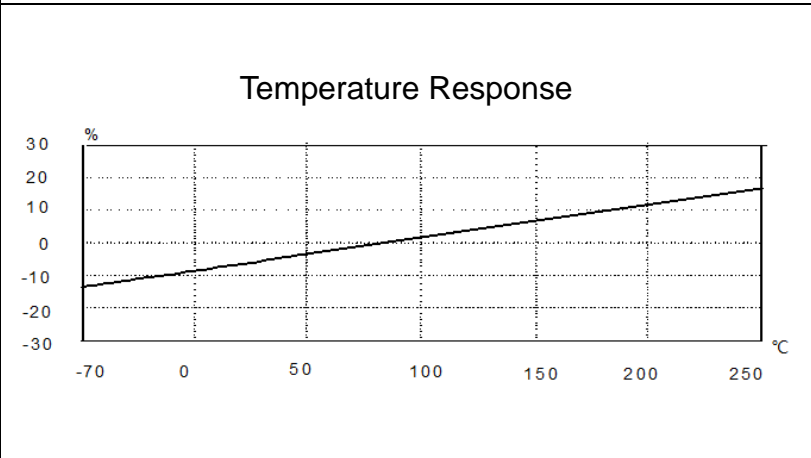
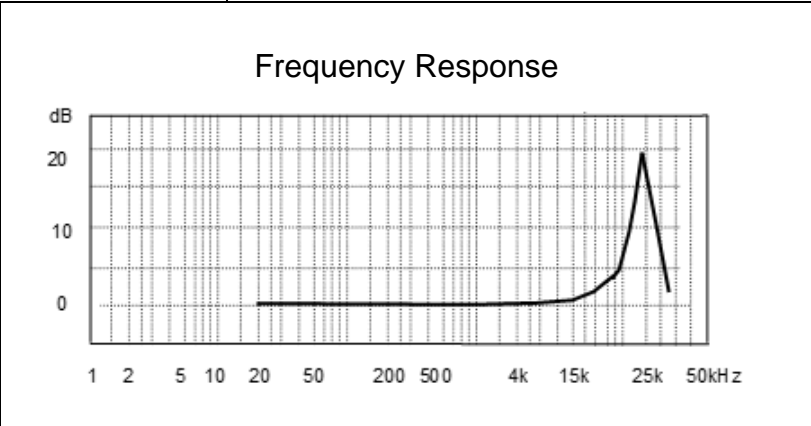
Version: **A** Date: **15/5/2023**

Sensor Feature:

- Shear design to reduce the influence of the environment on the signal
- Using wide temperature coefficient ceramic material
- Stable output in high and low temperature



Performance	MM272A-20
Sensitivity ($\pm 10\%$)	20 pC/g
Measurement Range	± 1000 g
Frequency Range (± 1 dB)	8,000 Hz
Resonant Frequency	~ 24 kHz
Non-linearity	$\leq 1\%$
Transverse Sensitivity	$\leq 5\%$
Temperature Range	-70 \sim +250 °C
Insulation Resistance	$\geq 10^9 \Omega$
Sensing Element/Geometry	Ceramic/Shear
Size mm	As left figure
Weight	~ 25 g
Mounting	M5 (Female)
Output Connector	M5 Side
Housing Material	Stainless Steel
Sealing	Welded



Metromatics

ABN: 47 007 346 287

Accessories	<ul style="list-style-type: none"> • Low noise cable 1ea 2m • Certificate of inspection 1ea • M5 stud 1ea
-------------	--

Remark	
--------	--

25 Flinders Parade, North Lakes QLD 4509, AUSTRALIA
www.metromatics.com.au sales@metromatics.com.au
 Brisbane: +61 7 3868 4255 | Sydney: +61 2 9460 4355
 Melbourne: +61 3 9872 4592 | Adelaide: +61 8 8343 8516